

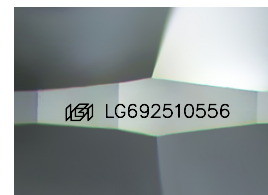
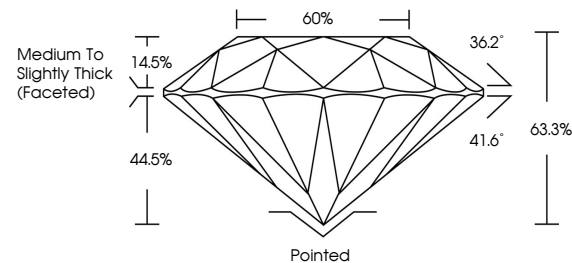


ELECTRONIC COPY

LABORATORY GROWN DIAMOND REPORT

LG692510556
Report verification at igi.org

PROPORTIONS



Sample Image Used

COLOR

D E F G H I J Faint Very Light Light

CLARITY

IF	VVS ¹⁻²	VS ¹⁻²	SI ¹⁻²	I ¹⁻³
Internally Flawless	Very Very Slightly Included	Very Slightly Included	Slightly Included	Included



© IGI 2020, International Gemological Institute

FD - 10 20

www.igi.org

LABORATORY GROWN DIAMOND REPORT



March 25, 2025

IGI Report Number **LG692510556**Description **LABORATORY GROWN DIAMOND**Shape and Cutting Style **ROUND BRILLIANT**

Measurements 7.31 - 7.35 X 4.64 MM

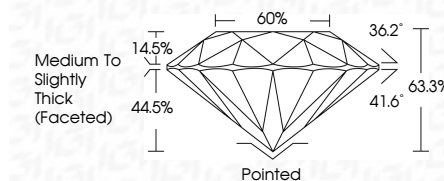
GRADING RESULTS

Carat Weight **1.55 CARAT**

Color Grade	D
-------------	---

Clarity Grade VS 2

Cut Grade **EXCELLENT**



ADDITIONAL GRADING INFORMATION

Polish **EXCELLENT**Symmetry **EXCELLENT**Fluorescence **NONE**Inscription(s) LG692510556

Comments: This Laboratory Grown Diamond was created by Chemical Vapor Deposition (CVD) growth process.
Type IIa



March 25, 2025	GI Report No. G692510556	ROUND BRILLIANT	1.55 CARAT
		3.01 - 7.35 X 4.61 MM	D
		Color Grade	VS 2
		Clarity Grade	EXCELLENT
		Cut Grade	68.3%
		Depth	60%
		Table	Medium to Slightly Thick (Faceted)
		Girdle	Pointed
		Culet	EXCELLENT
		Polish	EXCELLENT
		Symmetry	NONE
		Fluorescence	#891 G692510555
		Inscription(s)	
		Comments:	
			This Laboratory Grown Diamond was created by Chemical Vapor Deposition (CVD) growth process.
			Type IIA