



ELECTRONIC COPY

LABORATORY GROWN DIAMOND REPORT

March 19, 2025	
IGI Report Number	LG692511378
Description	LABORATORY GROWN DIAMOND
Shape and Cutting Style	ROUND BRILLIANT
Measurements	6.85 - 6.91 X 4.17 MM

GRADING RESULTS

Carat Weight	1.22 CARAT
Color Grade	D
Clarity Grade	VVS 2
Cut Grade	IDEAL

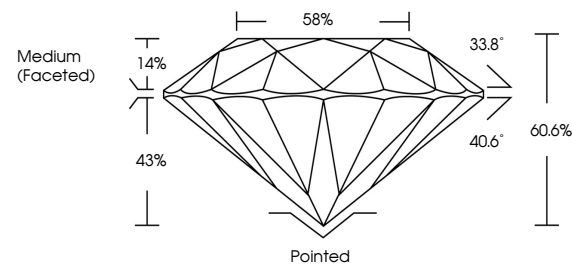
ADDITIONAL GRADING INFORMATION

Polish	EXCELLENT
Symmetry	EXCELLENT
Fluorescence	NONE
Inscription(s)	 LG692511378

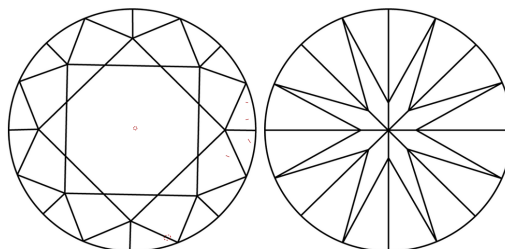
Comments: As Grown - No indication of post-growth treatment.
This Laboratory Grown Diamond was created by High Pressure High Temperature (HPHT) growth process.
Type II

LG692511378
Report verification at igi.org

PROPORTIONS

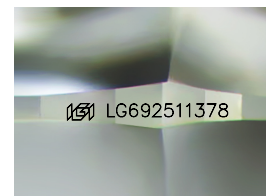


CLARITY CHARACTERISTICS



KEY TO SYMBOLS

Red symbols indicate internal characteristics.
Green symbols indicate external characteristics.



Sample Image Used

COLOR

D E F G H I J Faint Very Light Light

CLARITY

IF WS¹⁻² VS¹⁻² SI¹⁻² I¹⁻³

Internally Flawless	Very Very Slightly Included	Very Slightly Included	Slightly Included	Included
------------------------	--------------------------------	---------------------------	----------------------	----------

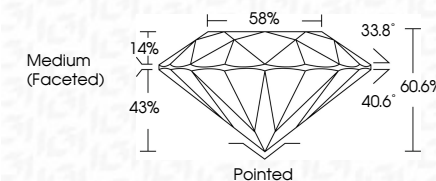
LABORATORY GROWN DIAMOND REPORT



March 19, 2025	
IGI Report Number	LG692511378
Description	LABORATORY GROWN DIAMOND
Shape and Cutting Style	ROUND BRILLIANT
Measurements	6.85 - 6.91 X 4.17 MM

GRADING RESULTS

Carat Weight	1.22 CARAT
Color Grade	D
Clarity Grade	VVS 2
Cut Grade	IDEAL



ADDITIONAL GRADING INFORMATION

Polish	EXCELLENT
Symmetry	EXCELLENT
Fluorescence	NONE
Inscription(s)	 LG692511378
Comments: As Grown - No indication of post-growth treatment.	
This Laboratory Grown Diamond was created by High Pressure High Temperature (HPHT) growth process.	
Type II	



© IGI 2020, International Gemological Institute

FD - 10 20



THIS DOCUMENT WAS PRODUCED WITH THE FOLLOWING SECURITY MEASURES: SPECIAL DOCUMENT PAPER, INK SCREENS, WATERMARK, BACKGROUND DESIGNS, HOLOGRAM AND OTHER SECURITY FEATURES NOT LISTED AND DO EXCEED DOCUMENT SECURITY INDUSTRY GUIDELINES

www.igi.org

March 19, 2025	Carat Weight	1.22 CARAT
G Report No. LG492511378	Color Grade	D
ROUND BRILLIANT	Clarity Grade	VVS 2
SI 1	Cut Grade	IDEAL
SI 1	Depth	60.6%
SI 1	Table	58%
SI 1	Girdle	Medium (Faceted)
SI 1	Culet	Pointed
SI 1	Polish	EXCELLENT
SI 1	Symmetry	EXCELLENT
SI 1	Fluorescence	NONE
SI 1	Inscriptions(s)	#69 LG492511378

Comments:

SI 1 - Growth - No indication of post-growth
SI 1 - The Laboratory Grown Diamond was
SI 1 - created by High Pressure High
SI 1 - Temperature (HPHT) growth process.
SI 1 - Type I