



ELECTRONIC COPY

LABORATORY GROWN DIAMOND REPORT

| | |
|-------------------------|--------------------------|
| March 18, 2025 | |
| IGI Report Number | LG692511401 |
| Description | LABORATORY GROWN DIAMOND |
| Shape and Cutting Style | ROUND BRILLIANT |
| Measurements | 6.82 - 6.87 X 4.19 MM |

GRADING RESULTS

| | |
|---------------|------------|
| Carat Weight | 1.22 CARAT |
| Color Grade | D |
| Clarity Grade | VVS 2 |
| Cut Grade | IDEAL |

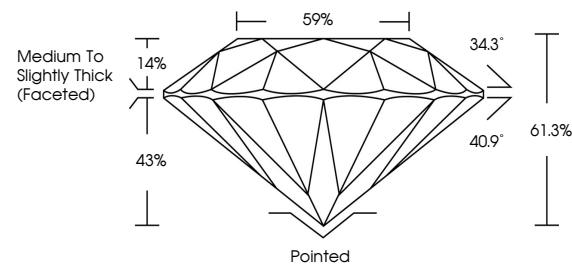
ADDITIONAL GRADING INFORMATION

| | |
|----------------|---|
| Polish | EXCELLENT |
| Symmetry | EXCELLENT |
| Fluorescence | NONE |
| Inscription(s) |  LG692511401 |

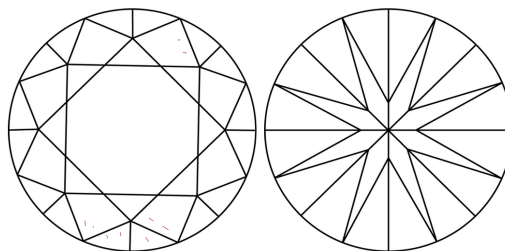
Comments: As Grown - No indication of post-growth treatment.
This Laboratory Grown Diamond was created by High Pressure High Temperature (HPHT) growth process.
Type II

LG692511401
Report verification at igi.org

PROPORTIONS

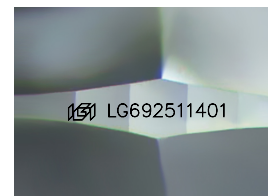


CLARITY CHARACTERISTICS



KEY TO SYMBOLS

Red symbols indicate internal characteristics.
Green symbols indicate external characteristics.



Sample Image Used

COLOR

D E F G H I J Faint Very Light Light

CLARITY

IF VS¹⁻² VS¹⁻² SI¹⁻² I¹⁻³

| | | | | |
|------------------------|--------------------------------|---------------------------|----------------------|----------|
| Internally Flawless | Very Very Slightly Included | Very Slightly Included | Slightly Included | Included |
|------------------------|--------------------------------|---------------------------|----------------------|----------|

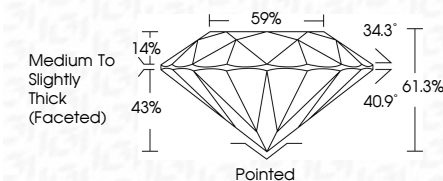
LABORATORY GROWN DIAMOND REPORT




| | |
|-------------------------|--------------------------|
| March 18, 2025 | |
| IGI Report Number | LG692511401 |
| Description | LABORATORY GROWN DIAMOND |
| Shape and Cutting Style | ROUND BRILLIANT |
| Measurements | 6.82 - 6.87 X 4.19 MM |

GRADING RESULTS

| | |
|---------------|------------|
| Carat Weight | 1.22 CARAT |
| Color Grade | D |
| Clarity Grade | VVS 2 |
| Cut Grade | IDEAL |



ADDITIONAL GRADING INFORMATION

| | |
|--|---|
| Polish | EXCELLENT |
| Symmetry | EXCELLENT |
| Fluorescence | NONE |
| Inscription(s) |  LG692511401 |
| Comments: As Grown - No indication of post-growth treatment. | |
| This Laboratory Grown Diamond was created by High Pressure High Temperature (HPHT) growth process. | |
| Type II | |



© IGI 2020, International Gemological Institute

FD - 10 20



THIS DOCUMENT WAS PRODUCED WITH THE FOLLOWING SECURITY MEASURES: SPECIAL DOCUMENT PAPER, INK SCREENS, WATERMARK, BACKGROUND DESIGNS, HOLOGRAM AND OTHER SECURITY FEATURES NOT LISTED AND DO EXCEED DOCUMENT SECURITY INDUSTRY GUIDELINES

www.igi.org

| | | | | | | | | | | | |
|----------------------|-----------------------|--------------|---------------|-----------|-------|-------|----------------------------------|--------------|-----------|-----------|--|
| March 18, 2025 | Carat Weight | Color Grade | Clarity Grade | Cut Grade | Depth | Table | Girdle | Fluorescence | Symmetry | Pavilions | Comments: |
| Report No LG02511401 | 3.92 - 4.87 X 4.19 MM | 1.22 CARAT D | VVS 2 | IDEAL | 61.3% | 69% | Medium to Slightly Thick Faceted | Painted | EXCELLENT | EXCELLENT | None |
| ROUND BRILLIANT | | | | | | | | | | | LG LG02511401 |
| | | | | | | | | | | | Not grown - No indication of post-growth |
| | | | | | | | | | | | This Laboratory Grown Diamond was created by High Pressure High Temperature (HPHT) growth process. |