



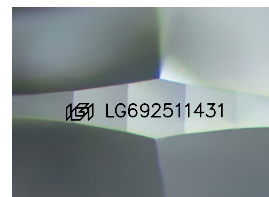
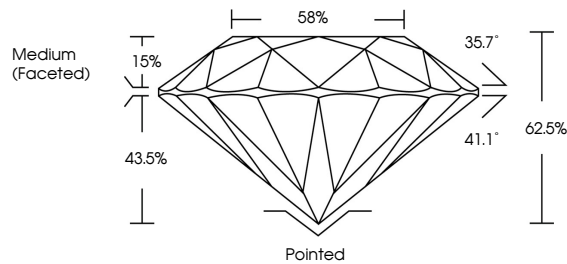
**INTERNATIONAL
GEMOLOGICAL
INSTITUTE**

ELECTRONIC COPY

LABORATORY GROWN DIAMOND REPORT

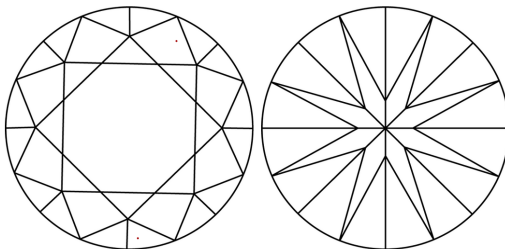
LG692511431
Report verification at igi.org

PROPORTIONS



Sample Image Used

CLARITY CHARACTERISTICS



KEY TO SYMBOLS

Red symbols indicate internal characteristics.
Green symbols indicate external characteristics.

COLOR

D E F G H I J Faint Very Light Light

CLARITY

IF WS¹⁻² VS¹⁻² SI¹⁻² |¹⁻³

Internally Flawless	Very Very Slightly Included	Very Slightly Included	Slightly Included	Included
------------------------	--------------------------------	---------------------------	----------------------	----------



© IGI 2020, International Gemological Institute

FD - 10 20

www.igi.org

THIS DOCUMENT WAS PRODUCED WITH THE FOLLOWING SECURITY MEASURES: SPECIAL DOCUMENT PAPER, INK SCREENS, WATERMARK, BACKGROUND DESIGNS, HOLOGRAM AND OTHER SECURITY FEATURES NOT LISTED AND DO EXCEED DOCUMENT SECURITY INDUSTRY GUIDELINES

LABORATORY GROWN DIAMOND REPORT



March 19, 2025

IGI Report Number **LG692511431**

Description	LABORATORY GROWN DIAMOND
-------------	--------------------------

Shape and Cutting Style **ROUND BRILLIANT**

Measurements 6.79 - 6.84 X 4.26 MM

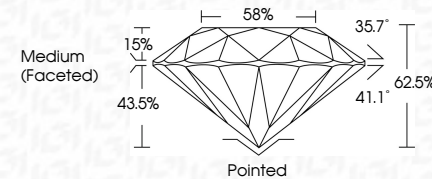
GRADING RESULTS

Carat Weight **1.22 CARAT**

Color Grade	E
-------------	---

Clarity Grade **VVS 2**

Cut Grade **IDEAL**



ADDITIONAL GRADING INFORMATION

Polish **EXCELLENCE**Symmetry **EXCELLENCE**

Fluorescence 5.4 10.5 10.5 NONI

Inscription(s) LG69251143

Comments: This Laboratory Grown Diamond was created by Chemical Vapor Deposition (CVD) growth process.
Type IIa



IG

March 19, 2025	IGI Report No LG592511431
ROUND BRILLIANT	
6.79 - 6.84 X 4.26 MM	1.22 CARAT
Carat Weight	E
Color Grade	VVS 2
Clarity Grade	IDEAL
Cut Grade	62.6%
Depth	59%
Table	Medium (Faceted)
Grade	
Quiet	Pointed
Polish	EXCELLENT
Symmetry	EXCELLENT
Fluorescence	NONE
Inscription(s)	18K LG592511431
Comments:	
<p>Chemically Enhanced Growth Diamond was created by Chemical Vapor Deposition (CVD) growth process.</p> <p>Type I_{IIa}</p>	