



ELECTRONIC COPY

LABORATORY GROWN DIAMOND REPORT

March 19, 2025	
IGI Report Number	LG692515109
Description	LABORATORY GROWN DIAMOND
Shape and Cutting Style	ROUND BRILLIANT
Measurements	6.56 - 6.64 X 4.08 MM

GRADING RESULTS

Carat Weight	1.09 CARAT
Color Grade	F
Clarity Grade	VVS 2
Cut Grade	IDEAL

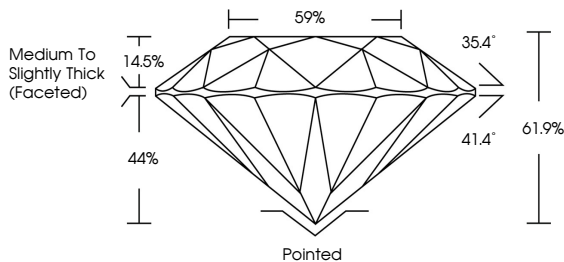
ADDITIONAL GRADING INFORMATION

Polish	EXCELLENT
Symmetry	EXCELLENT
Fluorescence	NONE
Inscription(s)	 LG692515109

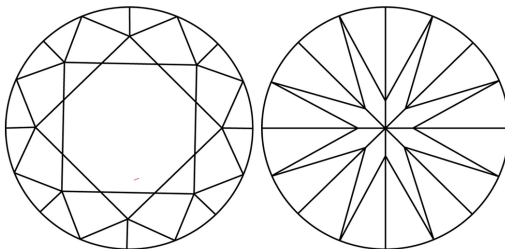
Comments: This Laboratory Grown Diamond was created by Chemical Vapor Deposition (CVD) growth process.
Type IIa

LG692515109
Report verification at igi.org

PROPORTIONS

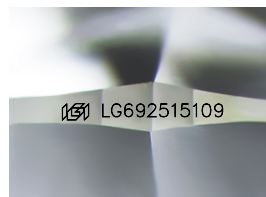


CLARITY CHARACTERISTICS



KEY TO SYMBOLS

Red symbols indicate internal characteristics.
Green symbols indicate external characteristics.



Sample Image Used

COLOR

D E F G H I J Faint Very Light Light

CLARITY

IF WS¹⁻² VS¹⁻² SI¹⁻² I¹⁻³

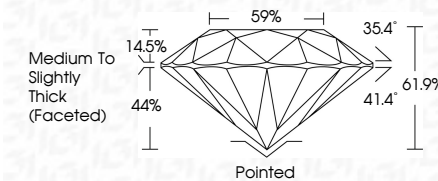
Internally Flawless	Very Very Slightly Included	Very Slightly Included	Slightly Included	Included
---------------------	-----------------------------	------------------------	-------------------	----------



March 19, 2025	
IGI Report Number	LG692515109
Description	LABORATORY GROWN DIAMOND
Shape and Cutting Style	ROUND BRILLIANT
Measurements	6.56 - 6.64 X 4.08 MM

GRADING RESULTS

Carat Weight	1.09 CARAT
Color Grade	F
Clarity Grade	VVS 2
Cut Grade	IDEAL



ADDITIONAL GRADING INFORMATION

Polish	EXCELLENT
Symmetry	EXCELLENT
Fluorescence	NONE
Inscription(s)	 LG692515109
<p>Comments: This Laboratory Grown Diamond was created by Chemical Vapor Deposition (CVD) growth process.</p> <p>Type IIa</p>	



© IGI 2020, International Gemological Institute

FD - 10 20

www.igi.org



March 19, 2025
IGI Report No LG692515109
ROUND BRILLIANT

5.56 - 6.64 X 0.08 MM	Carat Weight	1.09 CARAT
	Color Grade	F
	Clarity Grade	VVS 2
	Cut Grade	IDEAL
	Depth	61.9%
	Table	59%
	Girdle	Medium to Slightly Thick (Faceted)
	Culet	Pointed
	Polish	EXCELLENT
	Symmetry	EXCELLENT
Fluorescence	NONE	
Comments	4441 160000000000	

Comments:
This Laboratory Grown Diamond was created by Chemical Vapor Deposition (CVD) growth process.