

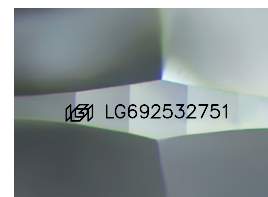
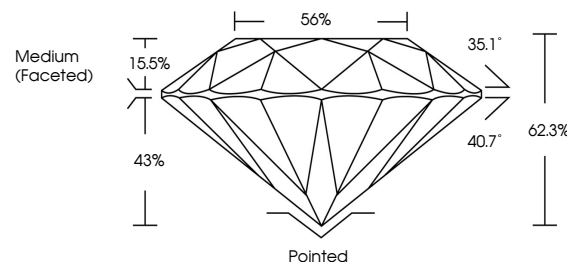


ELECTRONIC COPY

LABORATORY GROWN DIAMOND REPORT

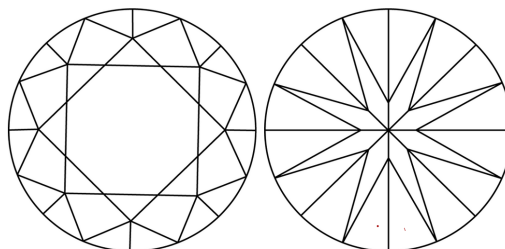
LG692532751
Report verification at iqi.org

PROPORTIONS



Sample Image Used

CLARITY CHARACTERISTICS



KEY TO SYMBOLS

Red symbols indicate internal characteristics.
Green symbols indicate external characteristics.

COLOR

D E F G H I J Faint Very Light Light

CLARITY

IF WS¹⁻² VS¹⁻² SI¹⁻² |¹⁻³

Internally Flawless	Very Very Slightly Included	Very Slightly Included	Slightly Included	Included
---------------------	-----------------------------	------------------------	-------------------	----------



© IGI 2020, International Gemological Institute

FD - 10 20

www.igi.org

LABORATORY GROWN DIAMOND REPORT



March 19, 2025

IGI Report Number **LG692532751**Description **LABORATORY GROWN DIAMOND**Shape and Cutting Style **ROUND BRILLIANT**

Measurements 6.77 - 6.83 X 4.23 MM

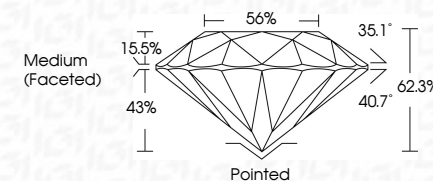
GRADING RESULTS

Carat Weight 1.20 CARAT

Color Grade D

Clarity Grade WS 1

Cut Grade **IDEAL**



ADDITIONAL GRADING INFORMATION

Polish EXCELLENT

Symmetry **EXCELLENT**Fluorescence **NONE**Inscription(s) LG692532751

Comments: As Grown - No indication of post-growth treatment.

This Laboratory Grown Diamond was created by High Pressure High Temperature (HPHT) growth process.

Type II



March 19, 2025	1.20 CARAT
GI Report No LG69252751	D
ROUND BRILLIANT	VVS 1
	IDEAL
	62.3%
	56%
	Medium (Frosted)
	Pointed
	EXCELLENT
	EXCELLENT
	NONE
	(#) LG69252751
Carat Weight	
Color Grade	
Clarity Grade	
Cut Grade	
Depth	
Table	
Proportion	
Grade	
Culet	
Polish	
Symmetry	
Fluorescence	
Annotations (3)	
Comments:	
	As Grown - No Indication of post-growth treatment.
	The Laboratory Grown Diamond was created by High Pressure High temperature (HPHT) growth process.