

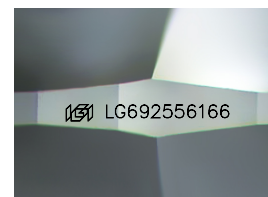
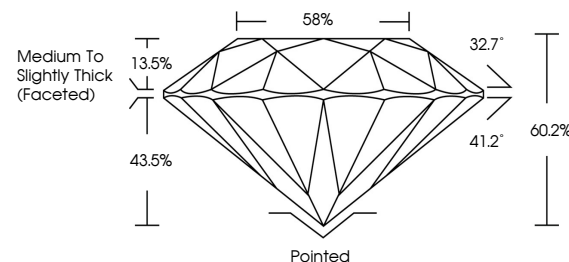


ELECTRONIC COPY

LABORATORY GROWN DIAMOND REPORT

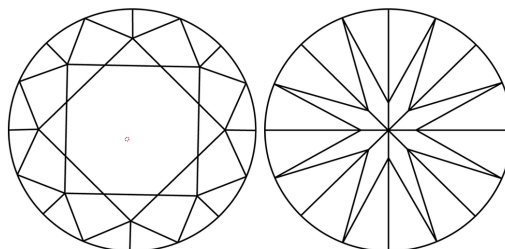
LG692556166
Report verification at lgi.org

PROPORTIONS



Sample Image Used

CLARITY CHARACTERISTICS



KEY TO SYMBOLS

Red symbols indicate internal characteristics.
Green symbols indicate external characteristics.

COLOR

D E F G H I J Faint Very Light Light

CLARITY

IF WS¹⁻² VS¹⁻² SI¹⁻² I¹⁻³

Internally Flawless	Very Very Slightly Included	Very Slightly Included	Slightly Included	Included
------------------------	--------------------------------	---------------------------	----------------------	----------

LABORATORY GROWN DIAMOND REPORT



May 20, 2025

IGI Report Number **LG692556166**Description **LABORATORY GROWN DIAMOND**Shape and Cutting Style **ROUND BRILLIANT**

Measurements 8.17 - 8.22 X 4.93 MM

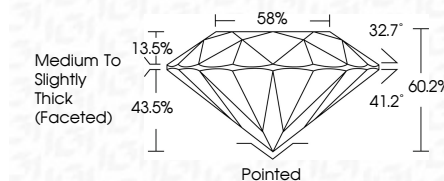
GRADING RESULTS

Carat Weight **2.01 CARATS**

Color Grade D

Clarity Grade WS 1

Cut Grade **EXCELLENT**



ADDITIONAL GRADING INFORMATION

Polish EXCELLENT

Symmetry **EXCELLENT**Fluorescence **NONE**Inscription(s) LG692556166

Comments: As Grown - No indication of post-growth treatment.

This Laboratory Grown Diamond was created by High Pressure High Temperature (HPHT) growth process.

Type II



© IGI 2020, International Gemological Institute

FD - 10 20



THIS DOCUMENT WAS PRODUCED WITH THE FOLLOWING SECURITY MEASURES: SPECIAL DOCUMENT PAPER, INK SCREENS, WATERMARK, BACKGROUND DESIGNS, HOLOGRAM AND OTHER SECURITY FEATURES NOT LISTED AND DO EXCEED DOCUMENT SECURITY INDUSTRY GUIDELINES

www.igi.org

May 20, 2025	2.01 CARATS	Carat Weight	VVS 1	Paired	Comments:
GI Report No. LG292556166	D	Color Grade	EXCELLENT	EXCELLENT	As Grown - No indication of post-growth
ROUND BRILLIANT		Clarity Grade	60.2%	EXCELLENT	This Laboratory Grown Diamond was
17.1 - 6.22 X 4.93 MM		Depth	58%	NONE	created by High Pressure High
		Table	Medium to slightly		temperature (HPHT) growth process.
		Girdle	Thick (Faceted)		Type II
				Culet	
				Polish	
				Symmetry	
				Fluorescence	
				Inscriptions(s)	lg91 LG292556166