

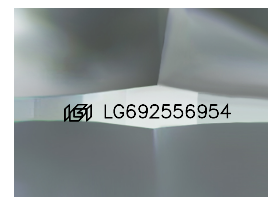
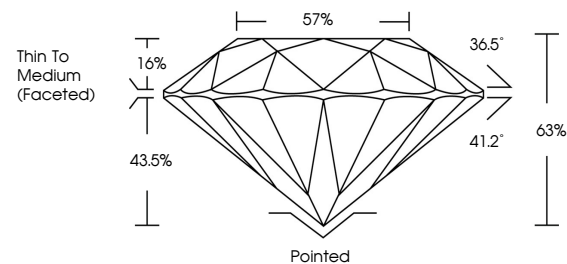


ELECTRONIC COPY

LABORATORY GROWN DIAMOND REPORT

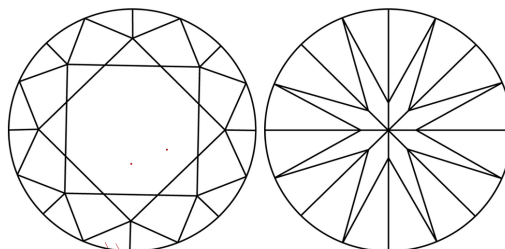
LG692556954
Report verification at igi.org

PROPORTIONS



Sample Image Used

CLARITY CHARACTERISTICS



KEY TO SYMBOLS

Red symbols indicate internal characteristics.
Green symbols indicate external characteristics.

COLOR

D E F G H I J Faint Very Light Light

CLARITY

IF WS¹⁻² VS¹⁻² SI¹⁻² |¹⁻³

Internally Flawless	Very Very Slightly Included	Very Slightly Included	Slightly Included	Included
------------------------	--------------------------------	---------------------------	----------------------	----------



May 21, 2025

IGI Report Number **LG692556954**

Description	LABORATORY GROWN DIAMOND
-------------	--------------------------

Shape and Cutting Style **ROUND BRILLIANT**

Measurements 7.26 - 7.32 X 4.60 MM

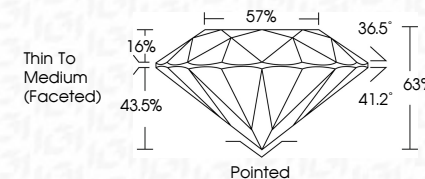
GRADING RESULTS

Carat Weight 1.51 CARAT

Color Grade E

Clarity Grade WS 2

Cut Grade **EXCELLENT**



ADDITIONAL GRADING INFORMATION

Polish EXCELLENT

Symmetry **EXCELLENT**Fluorescence NONInscription(s) LG692556954

Comments: This Laboratory Grown Diamond was created by Chemical Vapor Deposition (CVD) growth process.
Type IIa



© IGI 2020, International Gemological Institute

FD - 10 20

www.igi.org



THIS DOCUMENT WAS PRODUCED WITH THE FOLLOWING SECURITY MEASURES: SPECIAL DOCUMENT PAPER, INK SCREENS, WATERMARK BACKGROUND DESIGNS, HOLOGRAM AND OTHER SECURITY FEATURES NOT LISTED AND DO EXCEED DOCUMENT SECURITY INDUSTRY GUIDELINES

May 21, 2025
IGI Report No LG692556954
ROUND BRILLIANT

7.26 - 7.32 X 4.60 MM		1.51 CARAT E	
Carat Weight	VVS 2	Excellent	68%
Color Grade	Excellent	57%	Thin To Medium (Faceted)
Clarity Grade	Excellent	Pointed	Excellent
Cut Grade	Excellent	Excellent	Excellent
Depth	Excellent	None	None
Table	Excellent	Fluorescence	
Girdle	Excellent		
Culet	Polish		
Symmetry	Symmetry		
Fluorescence			

Comments:
This Laboratory Grown Diamond was created by Chemical Vapor Deposition (CVD) growth process.