

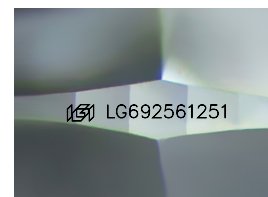
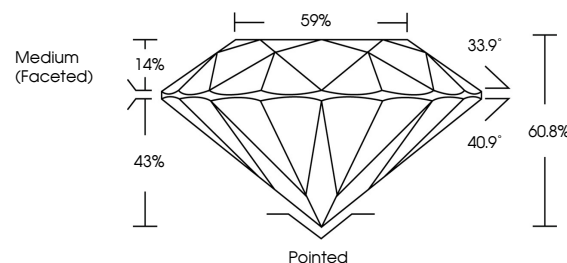


ELECTRONIC COPY

LABORATORY GROWN DIAMOND REPORT

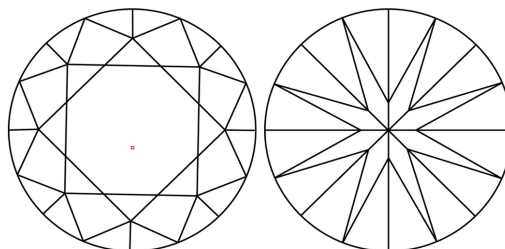
LG692561251
Report verification at igi.org

PROPORTIONS



Sample Image Used

CLARITY CHARACTERISTICS



KEY TO SYMBOLS

Red symbols indicate internal characteristics.
Green symbols indicate external characteristics.

COLOR

D E F G H I J Faint Very Light Light

CLARITY

IF WS¹⁻² VS¹⁻² SI¹⁻² |¹⁻³

Internally Flawless	Very Very Slightly Included	Very Slightly Included	Slightly Included	Included
------------------------	--------------------------------	---------------------------	----------------------	----------

LABORATORY GROWN DIAMOND REPORT



April 29, 2025

IGI Report Number **LG692561251**Description **LABORATORY GROWN DIAMOND**Shape and Cutting Style **ROUND BRILLIANT**

Measurements 8.31 - 8.35 X 5.07 MM

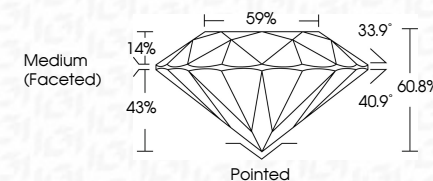
GRADING RESULTS

Carat Weight **2.16 CARATS**

Color Grade

Clarity Grade VS 1

Cut Grade **IDEAL**



ADDITIONAL GRADING INFORMATION

Polish EXCELLENT

Symmetry **EXCELLENT**Fluorescence **NONE**Inscription(s) LG692561251

Comments: This Laboratory Grown Diamond was created by Chemical Vapor Deposition (CVD) growth process.

Type IIa



April 29, 2025	GL Report No. LG92561251	2.16 CARATS	VSI	Pointed	
ROUND BRILLIANT		E	IDEAL	EXCELLENT	
			60.8%	EXCELLENT	
			59%	NONE	
			Medium (Faceted)		lgsl LG92561251
3.31 - 3.35 X 5.07 MM					
Carat Weight	Color Grade	Clarity Grade	Cut Grade	Culet	
			Depth	Polish	
			Table	Symmetry	
			Girdle	Fluorescence	
				Inscriptions(s)	
Comments:					
The Laboratory Grown Diamond was found to be a Natural Polished Deformation Grown Diamond (NGD) with no growth type Iia					

