



**ELECTRONIC COPY**

## LABORATORY GROWN DIAMOND REPORT

|                         |                          |
|-------------------------|--------------------------|
| March 27, 2025          |                          |
| IGI Report Number       | LG692589703              |
| Description             | LABORATORY GROWN DIAMOND |
| Shape and Cutting Style | ROUND BRILLIANT          |
| Measurements            | 7.48 - 7.51 X 4.61 MM    |

## GRADING RESULTS

|               |            |
|---------------|------------|
| Carat Weight  | 1.58 CARAT |
| Color Grade   | E          |
| Clarity Grade | VVS 2      |
| Cut Grade     | IDEAL      |

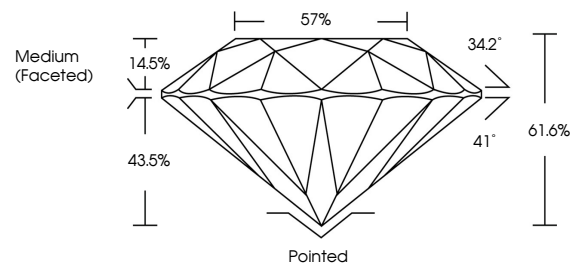
### ADDITIONAL GRADING INFORMATION

|                |   |
|----------------|---|
| Polish         | EXCELLENT   |
| Symmetry       | EXCELLENT   |
| Fluorescence   | NONE  |
| Inscription(s) |  LG692589703 |

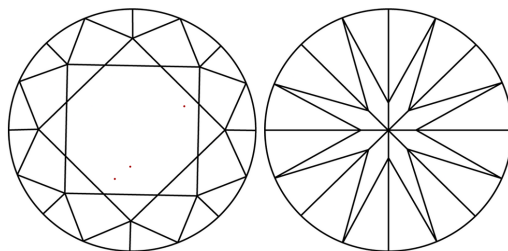
Comments: This Laboratory Grown Diamond was created by Chemical Vapor Deposition (CVD) growth process.  
Type IIa

LG692589703  
Report verification at [igi.org](https://igi.org)

## PROPORTIONS

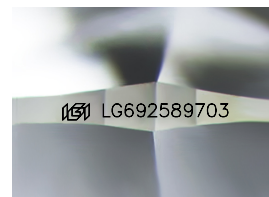


## CLARITY CHARACTERISTICS



## KEY TO SYMBOLS

Red symbols indicate internal characteristics.  
Green symbols indicate external characteristics.



Sample Image Used

**COLOR**

D E F G H I J Faint Very Light Light

## CLARITY

IF WS<sup>1-2</sup> VS<sup>1-2</sup> SI<sup>1-2</sup> |<sup>1-3</sup>

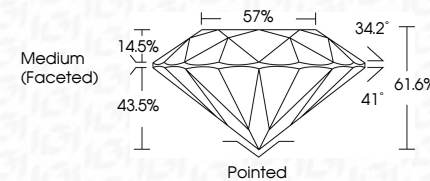
|                        |                                |                           |                      |          |
|------------------------|--------------------------------|---------------------------|----------------------|----------|
| Internally<br>Flawless | Very Very<br>Slightly Included | Very<br>Slightly Included | Slightly<br>Included | Included |
|------------------------|--------------------------------|---------------------------|----------------------|----------|



|                         |                          |
|-------------------------|--------------------------|
| March 27, 2025          |                          |
| IGI Report Number       | LG692589703              |
| Description             | LABORATORY GROWN DIAMOND |
| Shape and Cutting Style | ROUND BRILLIANT          |
| Measurements            | 7.48 - 7.51 X 4.61 MM    |

## GRADING RESULTS

|               |            |
|---------------|------------|
| Carat Weight  | 1.58 CARAT |
| Color Grade   | E          |
| Clarity Grade | VVS 2      |
| Cut Grade     | IDEAL      |



### ADDITIONAL GRADING INFORMATION

|  |   |
|--|---|
| Polish   | EXCELLENT   |
| Symmetry   | EXCELLENT   |
| Fluorescence   | NONE  |
| Inscription(s)   |  LG692589703 |
| Comments: This Laboratory Grown Diamond was created by Chemical Vapor Deposition (CVD) growth process. |   |
| Type IIa   |   |



© IGI 2020, International Gemological Institute

FD - 10 20



THIS DOCUMENT WAS PRODUCED WITH THE FOLLOWING SECURITY MEASURES: SPECIAL DOCUMENT PAPER, INK SCREENS, WATERMARK, BACKGROUND DESIGNS, HOLOGRAM AND OTHER SECURITY FEATURES NOT LISTED AND DO EXCEED DOCUMENT SECURITY INDUSTRY GUIDELINES

**www.igi.org**

|                |                          |                 |            |             |               |           |       |       |                  |        |           |           |              |                 |  |
|----------------|--------------------------|-----------------|------------|-------------|---------------|-----------|-------|-------|------------------|--------|-----------|-----------|--------------|-----------------|--|
| March 27, 2026 | GI Report No: LSG9259703 | ROUND BRILLIANT | 1.58 CARAT | E           | VVS 2         | IDEAL     | 61.0% | 57%   | Medium (Faceted) | Ported | EXCELLENT | EXCELLENT | NONE         | 1691 LSG9259703 | Comments:<br>Chemically Grown Diamond was<br>treated by Chemical Vapor Deposition<br>(CVD) growth process.<br>Type IIa |
|                |                          |                 |            | Color Grade | Clarity Grade | Cut Grade | Depth | Table | Girdle           | Culet  | Polish    | Symmetry  | Fluorescence | Inscriptions(s) |  |