



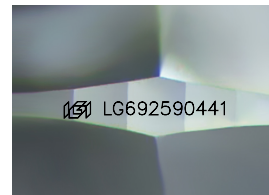
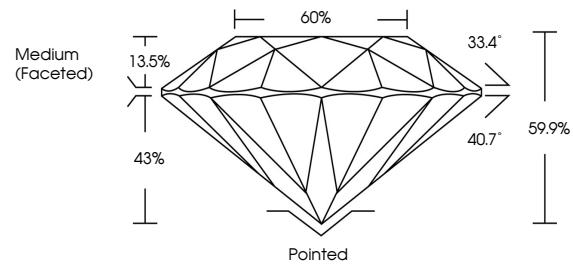
**INTERNATIONAL  
GEMOLOGICAL  
INSTITUTE**

**ELECTRONIC COPY**

## LABORATORY GROWN DIAMOND REPORT

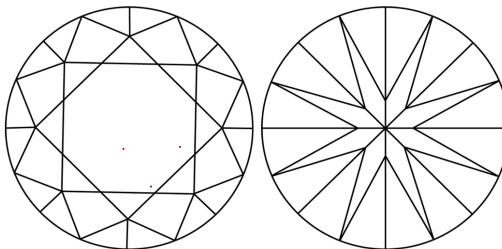
LG692590441  
Report verification at [igi.org](https://igi.org)

## PROPORTIONS



Sample Image Used

## CLARITY CHARACTERISTICS



## KEY TO SYMBOLS

Red symbols indicate internal characteristics.  
Green symbols indicate external characteristics.

**COLOR**

D E F G H I J Faint Very Light Light

## CLARITY

IF                      WS<sup>1-2</sup>                      VS<sup>1-2</sup>                      SI<sup>1-2</sup>                      |<sup>1-3</sup>

Internally Flawless	Very Very Slightly Included	Very Slightly Included	Slightly Included	Included
------------------------	--------------------------------	---------------------------	----------------------	----------



© IGI 2020, International Gemological Institute

FD - 10 20

**www.igi.org**

LABORATORY GROWN DIAMOND REPORT



March 20, 2025

IGI Report Number **LG692590441**

Description	LABORATORY GROWN DIAMOND
-------------	--------------------------

Shape and Cutting Style **ROUND BRILLIANT**

Measurements	6.60 - 6.63 X 3.96 MM
--------------	-----------------------

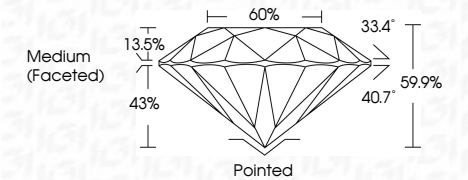
## GRADING RESULTS

Carat Weight 1.06 CARAT

Color Grade **D**

Clarity Grade **VVS 2**

Cut Grade **IDEAL**



### ADDITIONAL GRADING INFORMATION

Polish **EXCELLENT**

Symmetry **EXCELLENT**

Fluorescence **NONE**Inscription(s)  LG692590441

Comments: This Laboratory Grown Diamond was created by Chemical Vapor Deposition (CVD) growth process.  
Type IIa



IGI

<b>March 20, 2025</b>	<b>Report No LG9789041</b>
<b>IGI REPORT</b>	<b>ROUND BULLANT</b>
<b>6.60 - 6.68 X 3.96 MM</b>	<b>1.06 CARAT</b>
<b>Corat Weight</b>	<b>D</b>
<b>Color Grade</b>	<b>VVS 2</b>
<b>Clarity Grade</b>	<b>IDEAL</b>
<b>Cut Grade</b>	<b>59 %</b>
<b>Depth</b>	<b>60%</b>
<b>Table</b>	<b>Medium (Focused)</b>
<b>Girdle</b>	<b>Pointed</b>
<b>Culet</b>	<b>EXCELLENT</b>
<b>Polish</b>	<b>EXCELLENT</b>
<b>Symmetry</b>	<b>NONE</b>
<b>Fluorescence</b>	<b>None</b>
<b>Inscription(s)</b>	<b>IGI LG9789041</b>
<b>Comments:</b>	
The Laboratory Grown Diamond was created by Chemical Vapor Deposition (CVD) growth process.	
Type Iia	