



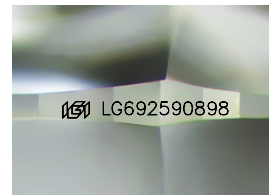
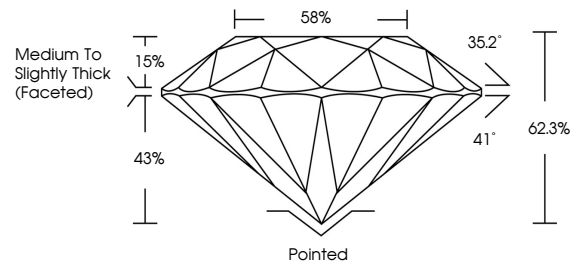
**INTERNATIONAL  
GEMOLOGICAL  
INSTITUTE**

**ELECTRONIC COPY**

## LABORATORY GROWN DIAMOND REPORT

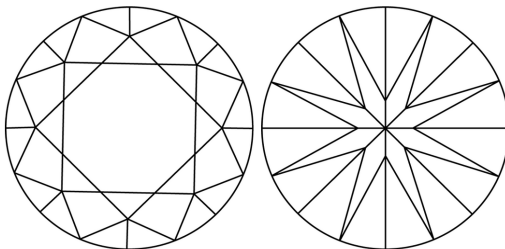
LG692590898  
Report verification at [igi.org](https://igi.org)

## PROPORTIONS



Sample Image Used

## CLARITY CHARACTERISTICS



## KEY TO SYMBOLS

Red symbols indicate internal characteristics.  
Green symbols indicate external characteristics.

**COLOR**

D E F G H I J Faint Very Light Light

## CLARITY

IF      WS<sup>1-2</sup>      VS<sup>1-2</sup>      S<sup>1-2</sup>      1-3

|                        |                                |                           |                      |          |
|------------------------|--------------------------------|---------------------------|----------------------|----------|
| Internally<br>Flawless | Very Very<br>Slightly Included | Very<br>Slightly Included | Slightly<br>Included | Included |
|------------------------|--------------------------------|---------------------------|----------------------|----------|



© IGI 2020, International Gemological Institute

FD - 10 20

**www.igi.org**

THIS DOCUMENT WAS PRODUCED WITH THE FOLLOWING SECURITY MEASURES: SPECIAL DOCUMENT PAPER, INK SCREENS, WATERMARK, BACKGROUND DESIGNS, HOLOGRAM AND OTHER SECURITY FEATURES NOT LISTED AND DO EXCEED DOCUMENT SECURITY INDUSTRY GUIDELINES

## LABORATORY GROWN DIAMOND REPORT



March 22, 2025

IGI Report Number **LG692590898**

|             |                          |
|-------------|--------------------------|
| Description | LABORATORY GROWN DIAMOND |
|-------------|--------------------------|

Shape and Cutting Style **ROUND BRILLIANT**

Measurements 7.35 - 7.40 X 4.60 MM

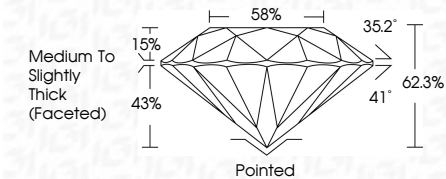
## GRADING RESULTS

Carat Weight 1.55 CARAT

Color Grade D

Clarity Grade **INTERNALLY FLAWLESS**

Cut Grade **IDEAL**



### ADDITIONAL GRADING INFORMATION

Polish **EXCELLENCE**Symmetry **EXCELLENCE**Fluorescence NONInscription(s)  LG69259089

Comments: As Grown - No indication of post-growth treatment.

This Laboratory Grown Diamond was created by High Pressure High Temperature (HPHT) growth process.  
Type II



IG

|  |                                     |
|--|-------------------------------------|
| March 22, 2025   | IGI Report No. LG9250098            |
| ROUND BRILLIANT  |                                     |
| 3.35 - 7.40 X 4.60 MM  | 1.55 CARAT                          |
| Color Weight   | D                                   |
| Color Grade  | IF                                  |
| Clarity Grade  | IDEAL                               |
| Cut Grade  | 62.3%                               |
| Depth  | 58%                                 |
| Table  | Medium to Slightly Thick (received) |
| Grade  |                                     |
| Quiet  | Polished                            |
| Polish   | EXCELLENT                           |
| Symmetry   | EXCELLENT                           |
| Fluorescence   | NONE                                |
| Inclusions (s)   | 681 LG9250098                       |
| Comments:  |                                     |
| As Grown - No indication of post-growth treatment.   |                                     |
| This Laboratory Grown Diamond was created by High Pressure High Temperature (HPHT) growth process. |                                     |