



**INTERNATIONAL
GEMOLOGICAL
INSTITUTE**

ELECTRONIC COPY

LABORATORY GROWN DIAMOND REPORT

March 25, 2025	
IGI Report Number	LG692591931
Description	LABORATORY GROWN DIAMOND
Shape and Cutting Style	ROUND BRILLIANT
Measurements	9.73 - 9.77 X 6.01 MM

GRADING RESULTS

Carat Weight	3.51 CARATS
Color Grade	E
Clarity Grade	VS 1
Cut Grade	IDEAL

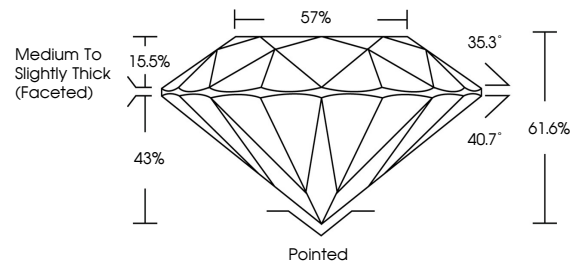
ADDITIONAL GRADING INFORMATION

Polish	EXCELLENT
Symmetry	EXCELLENT
Fluorescence	NONE
Inscription(s)	 LG692591931

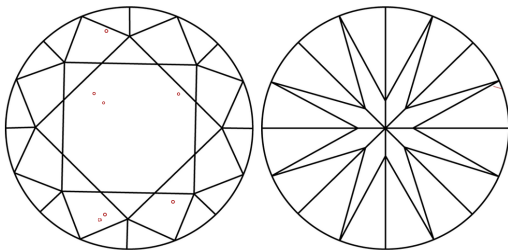
Comments: HEARTS & ARROWS
This Laboratory Grown Diamond was created by
Chemical Vapor Deposition (CVD) growth process.
Type IIa

LG692591931
Report verification at [igi.org](https://www.igi.org)

PROPORTIONS

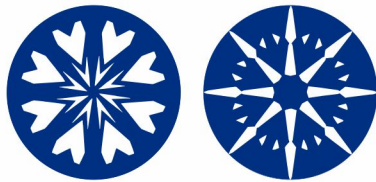


CLARITY CHARACTERISTICS

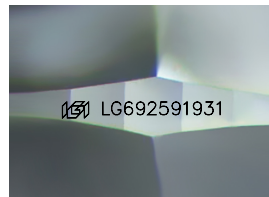


KEY TO SYMBOLS

Red symbols indicate internal characteristics.
Green symbols indicate external characteristics.



www.igi.org



Sample Image Used

COLOR

D E F G H I J Faint Very Light Light

CLARITY

IF WS¹⁻² VS¹⁻² SI¹⁻² I¹⁻³

Internally Flawless	Very Very Slightly Included	Very Slightly Included	Slightly Included	Included
------------------------	--------------------------------	---------------------------	----------------------	----------



© IGI 2020, International Gemological Institute

FD - 10 20

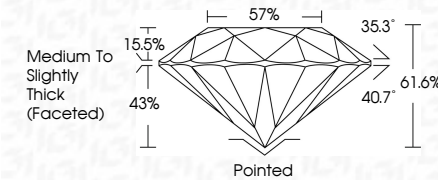
LABORATORY GROWN DIAMOND REPORT




March 25, 2025	
IGI Report Number	LG692591931
Description	LABORATORY GROWN DIAMOND
Shape and Cutting Style	ROUND BRILLIANT
Measurements	9.73 - 9.77 X 6.01 MM

GRADING RESULTS

Carat Weight	3.51 CARATS
Color Grade	E
Clarity Grade	VS 1
Cut Grade	IDEAL



ADDITIONAL GRADING INFORMATION

Polish	EXCELLENT
Symmetry	EXCELLENT
Fluorescence	NONE
Inscription(s)	 LG692591931
Comments: HEARTS & ARROWS	
This Laboratory Grown Diamond was created by Chemical Vapor Deposition (CVD) growth process.	
Type IIa	



IG

March 25, 2025
IGI Report No LG692591931
ROUND BRILLIANT

9.73 - 9.77 X 6.01 MM	3.61 CARATS	E
Color Weight	VS 1	POINTE
Color Grade	IDEAL	EXCELLENT
Clarity Grade	61.6%	EXCELLENT
Cut Grade	57%	NONE
Depth	Medium to Slightly Thick (faceted)	4.61 (5.09/5.90/3.1)
Table		Fluorescence
Girdle		Inclusions(s)
Culet		
Polish		
Symmetry		
Fluorescence		

Comments:
HEARTS & ARROWS
This Laboratory Grown Diamond was
created by Chemical Vapor Deposition
(CVD) growth process.