



INTERNATIONAL GEMOLOGICAL INSTITUTE

LABORATORY GROWN DIAMOND REPORT

April 1, 2025
IGI Report Number **LG692595414**
Description **LABORATORY GROWN DIAMOND**
Shape and Cutting Style **ROUND BRILLIANT**
Measurements **5.33 - 5.35 X 3.31 MM**

GRADING RESULTS

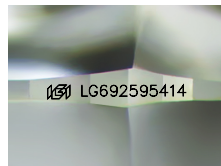
Carat Weight **0.58 CARAT**
Color Grade **D**
Clarity Grade **VVS 2**
Cut Grade **IDEAL**

ADDITIONAL GRADING INFORMATION

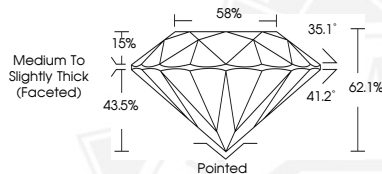
Polish **EXCELLENT**
Symmetry **EXCELLENT**
Fluorescence **NONE**
Inscription(s) **IGI LG692595414**

Comments: HEARTS & ARROWS
This Laboratory Grown Diamond was created by Chemical Vapor
Deposition (CVD) growth process.
Type IIa

ELECTRONIC COPY



Sample Image Used



HEARTS & ARROWS



April 1, 2025
IGI Report Number **LG692595414**
ROUND BRILLIANT
LABORATORY GROWN DIAMOND
5.33 - 5.35 X 3.31 MM
Carat Weight **0.58 CARAT**
Color Grade **D**
Clarity Grade **VVS 2**
Cut Grade **IDEAL**
Polish **EXCELLENT**
Symmetry **EXCELLENT**
Fluorescence **NONE**
Inscription(s) **IGI LG692595414**
Comments: HEARTS & ARROWS This
Laboratory Grown Diamond was
created by Chemical Vapor
Deposition (CVD) growth process.
Type IIa



April 1, 2025
IGI Report Number **LG692595414**
ROUND BRILLIANT
LABORATORY GROWN DIAMOND
5.33 - 5.35 X 3.31 MM
Carat Weight **0.58 CARAT**
Color Grade **D**
Clarity Grade **VVS 2**
Cut Grade **IDEAL**
Polish **EXCELLENT**
Symmetry **EXCELLENT**
Fluorescence **NONE**
Inscription(s) **IGI LG692595414**
Comments: HEARTS & ARROWS This
Laboratory Grown Diamond was
created by Chemical Vapor
Deposition (CVD) growth process.
Type IIa



THIS DOCUMENT WAS PRODUCED WITH THE FOLLOWING SECURITY MEASURES: SPECIAL DOCUMENT PAPER, INK SCREENS, WATERMARK, BACKGROUND DESIGNS, HOLOGRAM AND OTHER SECURITY FEATURES NOT LISTED AND DO EXCEED DOCUMENT SECURITY INDUSTRY GUIDELINES.

For terms & conditions and to verify this report, please visit www.igi.org