



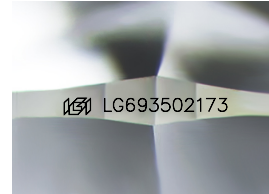
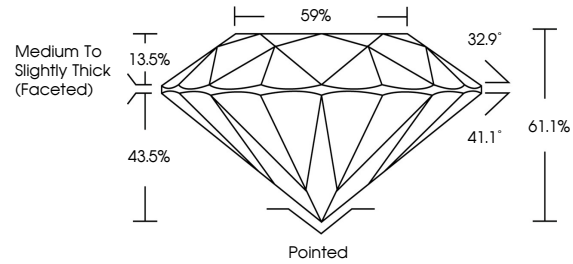
**INTERNATIONAL  
GEMOLOGICAL  
INSTITUTE**

**ELECTRONIC COPY**

## LABORATORY GROWN DIAMOND REPORT

LG693502173  
Report verification at [igi.org](https://igi.org)

## PROPORTIONS



Sample Image Used

**COLOR**

D	E	F	G	H	I	J	Faint	Very Light	Light
---	---	---	---	---	---	---	-------	------------	-------

## CLARITY

IF	WVS <sup>1-2</sup>	VS <sup>1-2</sup>	SI <sup>1-2</sup>	I <sup>1-3</sup>
Internally Flawless	Very Very Slightly Included	Very Slightly Included	Slightly Included	Included



© IGI 2020, International Gemological Institute

FD - 10 20

## LABORATORY GROWN DIAMOND REPORT



March 21, 2025

IGI Report Number **LG693502173**

Description	LABORATORY GROWN DIAMOND
-------------	--------------------------

Shape and Cutting Style **ROUND BRILLIANT**

Measurements 6.85 - 6.88 X 4.19 MM

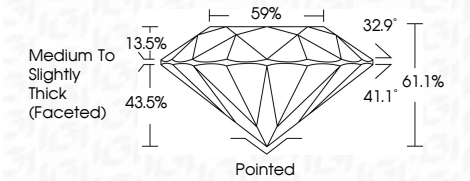
## GRADING RESULTS

Carat Weight 1.21 CARAT

Color Grade	E
-------------	---

Clarity Grade VS 1

Cut Grade **IDEAL**



### ADDITIONAL GRADING INFORMATION

Polish **EXCELLENT**Symmetry **EXCELLENT**Fluorescence **NONE**Inscription(s) **151** LG693502173

Comments: This Laboratory Grown Diamond was created by Chemical Vapor Deposition (CVD) growth process.  
Type IIa



IGI

March 21, 2025	IGI Report No. LG59802173		ROUND BRILLIANT	
6.85 - 6.89 X 4.19 MM		1.21 CARAT	E	
Carat Weight	Color Grade	Vs1	ID56L	61.1%
Clarity Grade	Cut Grade	59%		
Depth	Table	Medium to Slightly Thick (recessed)		
Girdle	Culet	Pointed		
	Polish	EXCELLENT		
	Symmetry	EXCELLENT		
	Fluorescence	NONE		
	Inscription(s)	1691 LG59802173		
Comments: This Laboratory Grown Diamond was created by Chemical Vapor Deposition (CVD) growth process. Type IId				