



**INTERNATIONAL
GEMOLOGICAL
INSTITUTE**

ELECTRONIC COPY

LG693505314
Report verification at igi.org

LABORATORY GROWN DIAMOND REPORT



March 24, 2025

IGI Report Number **LG693505314**Description **LABORATORY GROWN DIAMOND**Shape and Cutting Style **ROUND BRILLIANT**

Measurements 9.09 - 9.11 X 5.47 MM

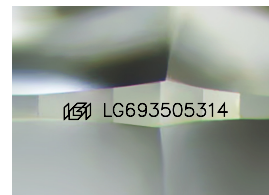
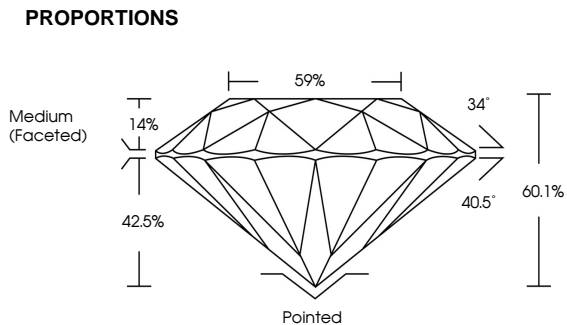
GRADING RESULTS

Carat Weight **2.79 CARATS**

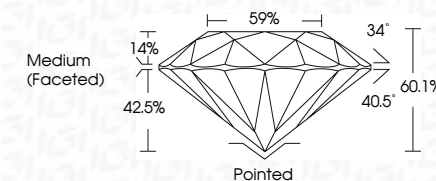
Color Grade **F**

Clarity Grade VS 1

Cut Grade **IDEAL**



Sample Image Used



COLOR

D E F G H I J Faint Very Light Light

CLARITY

IF WS¹⁻² VS¹⁻² SI¹⁻² |¹⁻³

Internally Flawless	Very Very Slightly Included	Very Slightly Included	Slightly Included	Included
------------------------	--------------------------------	---------------------------	----------------------	----------



© IGI 2020, International Gemological Institute

FD - 10 20

www.igi.org



THIS DOCUMENT WAS PRODUCED WITH THE FOLLOWING SECURITY MEASURES: SPECIAL DOCUMENT PAPER, INK SCREENS, WATERMARK, BACKGROUND DESIGNS, HOLOGRAM AND OTHER SECURITY FEATURES NOT LISTED AND DO EXCEED DOCUMENT SECURITY INDUSTRY GUIDELINES



IG

March 24, 2025	
IGI Report No LG6980314	
ROUND BRILLIANT	
9.09 - 9.11 X 6.47 MM	2.79 CARATS
Carat Weight	F
Color Grade	Vs 1
Clarity Grade	IDEAL
Cut Grade	60.1%
Depth	69%
Table	Medium (Faceted)
Girdle	
Culet	Pointed
Polish	EXCELLENT
Symmetry	EXCELLENT
Fluorescence	NONE
Inscription(s)	IGI LG6980314
Comments:	
This Laboratory Grown Diamond was created by Chemical Vapor Deposition (CVD) growth process.	
Type IIC	

Comments:
This Laboratory Grown Diamond was created by Chemical Vapor Deposition (CVD) growth process.