



**ELECTRONIC COPY**

## LABORATORY GROWN DIAMOND REPORT

March 23, 2025	
IGI Report Number	LG693517574
Description	LABORATORY GROWN DIAMOND
Shape and Cutting Style	ROUND BRILLIANT
Measurements	8.09 - 8.13 X 5.02 MM

## GRADING RESULTS

Carat Weight	2.03 CARATS
Color Grade	D
Clarity Grade	VVS 1
Cut Grade	IDEAL

### ADDITIONAL GRADING INFORMATION

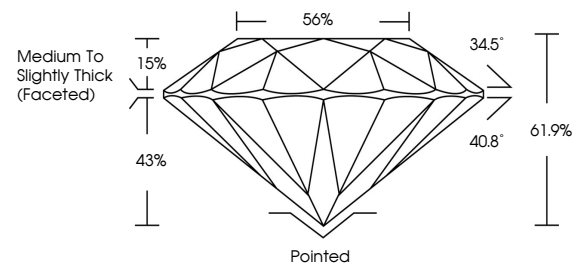
Polish	EXCELLENT
Symmetry	EXCELLENT
Fluorescence	NONE
Inscription(s)	 LG693517574

Comments: As Grown - No indication of post-growth treatment.

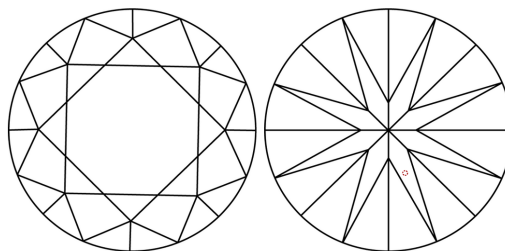
This Laboratory Grown Diamond was created by High Pressure High Temperature (HPHT) growth process.  
Type II

LG693517574  
Report verification at [igi.org](https://igi.org)

## PROPORTIONS

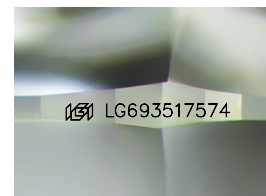


## CLARITY CHARACTERISTICS



### KEY TO SYMBOLS

Red symbols indicate internal characteristics.  
Green symbols indicate external characteristics.



Sample Image Used

**COLOR**

D E F G H I J Faint Very Light Light

## CLARITY

IF WS<sup>1-2</sup> VS<sup>1-2</sup> SI<sup>1-2</sup> |<sup>1-3</sup>

Internally Flawless	Very Very Slightly Included	Very Slightly Included	Slightly Included	Included
------------------------	--------------------------------	---------------------------	----------------------	----------

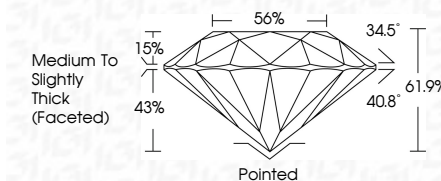
## LABORATORY GROWN DIAMOND REPORT



March 23, 2025	
IGI Report Number	LG693517574
Description	LABORATORY GROWN DIAMOND
Shape and Cutting Style	ROUND BRILLIANT
Measurements	8.09 - 8.13 X 5.02 MM

## GRADING RESULTS

Carat Weight	2.03 CARATS
Color Grade	D
Clarity Grade	VVS 1
Cut Grade	IDEAL



### ADDITIONAL GRADING INFORMATION

Polish	EXCELLENT
Symmetry	EXCELLENT
Fluorescence	NONE
Inscription(s)	 LG693517574

Comments: As Grown - No indication of post-growth treatment.

This Laboratory Grown Diamond was created by High Pressure High Temperature (HPHT) growth process.  
Type II



© IGI 2020, International Gemological Institute

FD - 10 20



THIS DOCUMENT WAS PRODUCED WITH THE FOLLOWING SECURITY MEASURES: SPECIAL DOCUMENT PAPER, INK SCREENS, WATERMARK, BACKGROUND DESIGNS, HOLOGRAM AND OTHER SECURITY FEATURES NOT LISTED AND DO EXCEED DOCUMENT SECURITY INDUSTRY GUIDELINE

**www.igi.org**

March 23, 2025	Report No LG698517574	2.03 CARATS
ROUND BRILLIANT		
SILOP - 4.13 X 5.02 MM		
Carat Weight	Color Grade	D
Clarity Grade	VVS 1	
Cut Grade	IDEAL	
Depth	61.9%	
Table	56%	
Grain	Medium to slightly thick faceted	
Color	Painted	
Clue(s)	EXCELLENT	
Polish	EXCELLENT	
Symmetry	NONE	
Fluorescence	lgsl LG698517574	
Inscriptions(s)		
Comments:	No growth - No indication of post-growth in this Laboratory Growth Diamond was created by High Pressure High Temperature (HPHT) growth process.	