

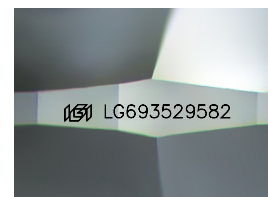
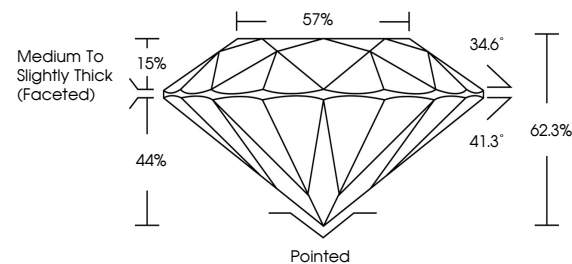


ELECTRONIC COPY

LABORATORY GROWN DIAMOND REPORT

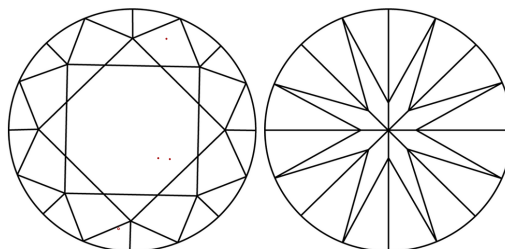
LG693529582
Report verification at igi.org

PROPORTIONS



Sample Image Used

CLARITY CHARACTERISTICS



KEY TO SYMBOLS

Red symbols indicate internal characteristics.
Green symbols indicate external characteristics.

COLOR

D E F G H I J Faint Very Light Light

CLARITY

IF WS¹⁻² VS¹⁻² SI¹⁻² |¹⁻³

Internally Flawless	Very Very Slightly Included	Very Slightly Included	Slightly Included	Included
------------------------	--------------------------------	---------------------------	----------------------	----------



© IGI 2020, International Gemological Institute

FD - 10 20

www.igi.org

LABORATORY GROWN DIAMOND REPORT



March 22, 2025

IGI Report Number **LG693529582**Description **LABORATORY GROWN DIAMOND**Shape and Cutting Style **ROUND BRILLIANT**

Measurements	6.56 - 6.60 X 4.10 MM
--------------	-----------------------

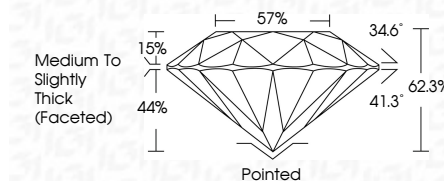
GRADING RESULTS

Carat Weight 1.09 CARAT

Color Grade E

Clarity Grade **VS 2**

Cut Grade **IDEAL**



ADDITIONAL GRADING INFORMATION

Polish **EXCELLENT**Symmetry **EXCELLENT**Fluorescence **NONE**Inscription(s) LG693529582

Comments: This Laboratory Grown Diamond was created by Chemical Vapor Deposition (CVD) growth process.
Type IIa



March 22, 2026	Q Report No. LG69329582	1.09 CARAT	E	VVS 2	Pointed
ROUND BRILLIANT				IDEAL	EXCELLENT
6.56 - 6.60 X 4.10 MM				62.3%	EXCELLENT
Color Grade				57%	NONE
Carat Weight				Medium to Slightly Thick Faceted	1691 LG69329582
Clarity Grade					
Cut Grade					
Depth					
Table					
Girdle					
Culet					
Polish					
Symmetry					
Fluorescence					
Inclusions(s)					
Comments:					
This Laboratory Grown Diamond Was Created by Chemical Vapor Deposition (CVD) growth process.					
Type IIa					