



**ELECTRONIC COPY**

## LABORATORY GROWN DIAMOND REPORT

|                         |                          |
|-------------------------|--------------------------|
| April 3, 2025           |                          |
| IGI Report Number       | LG693544533              |
| Description             | LABORATORY GROWN DIAMOND |
| Shape and Cutting Style | ROUND BRILLIANT          |
| Measurements            | 9.83 - 9.89 X 5.98 MM    |

## GRADING RESULTS

|               |             |
|---------------|-------------|
| Carat Weight  | 3.56 CARATS |
| Color Grade   | D           |
| Clarity Grade | VS 2        |
| Cut Grade     | IDEAL       |

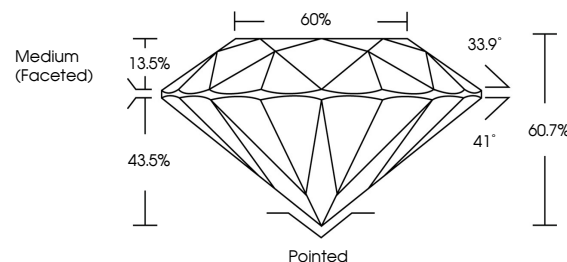
### ADDITIONAL GRADING INFORMATION

|                |                |
|----------------|----------------|
| Polish         | EXCELLENT      |
| Symmetry       | EXCELLENT      |
| Fluorescence   | NONE           |
| Inscription(s) | 15 LG693544533 |

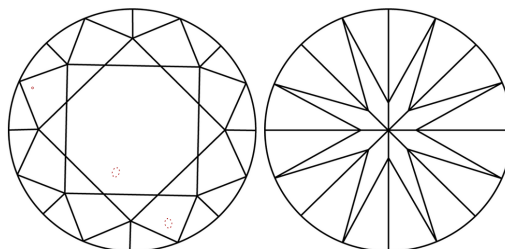
Comments: This Laboratory Grown Diamond was created by Chemical Vapor Deposition (CVD) growth process.  
Type IIa

LG693544533  
Report verification at [lgi.org](https://lgi.org)

## PROPORTIONS

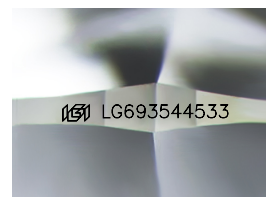


## CLARITY CHARACTERISTICS



## KEY TO SYMBOLS

Red symbols indicate internal characteristics.  
Green symbols indicate external characteristics.



Sample Image Used

## COLOR

D E F G H I J Faint Very Light Light

## CLARITY

IF                      WS<sup>1-2</sup>                      VS<sup>1-2</sup>                      SI<sup>1-2</sup>                      |<sup>1-3</sup>

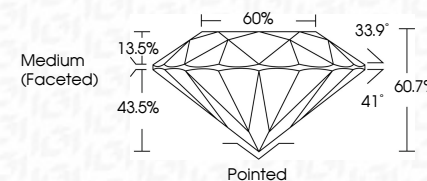
| Internally<br>Flawless | Very Very<br>Slightly Included | Very<br>Slightly Included | Slightly<br>Included | Included |
|------------------------|--------------------------------|---------------------------|----------------------|----------|
|------------------------|--------------------------------|---------------------------|----------------------|----------|



|                         |                          |
|-------------------------|--------------------------|
| April 3, 2025           |                          |
| IGI Report Number       | LG693544533              |
| Description             | LABORATORY GROWN DIAMOND |
| Shape and Cutting Style | ROUND BRILLIANT          |
| Measurements            | 9.83 - 9.89 X 5.98 MM    |

## GRADING RESULTS

|               |             |
|---------------|-------------|
| Carat Weight  | 3.56 CARATS |
| Color Grade   | D           |
| Clarity Grade | VS 2        |
| Cut Grade     | IDEAL       |



### ADDITIONAL GRADING INFORMATION

|   |   |
|---|---|
| Polish  | EXCELLENT   |
| Symmetry  | EXCELLENT   |
| Fluorescence  | NONE  |
| Inscription(s)  |  LG693544553 |
| <p>Comments: This Laboratory Grown Diamond was created by Chemical Vapor Deposition (CVD) growth process.</p> <p>Type IIa</p> |   |



© IGI 2020, International Gemological Institute

FD - 10 20



THIS DOCUMENT WAS PRODUCED WITH THE FOLLOWING SECURITY MEASURES: SPECIAL DOCUMENT PAPER, INK SCREENS, WATERMARK, BACKGROUND DESIGNS, HOLOGRAM AND OTHER SECURITY FEATURES NOT LISTED AND DO EXCEED DOCUMENT SECURITY INDUSTRY GUIDELINE

**www.igi.org**

April 3, 2025  
GI Report No LG693544533  
ROUND BRILLIANT

|                       |                  |           |
|-----------------------|------------------|-----------|
| 8.83 - 9.99 X 5.98 MM | 3.56 CARATS      | D         |
| Carat Weight          | Vs 2             | Pointed   |
| Color Grade           | IDSL             | EXCELLENT |
| Clarity Grade         | 60.7%            | EXCELLENT |
| Cut Grade             | 60%              | NONE      |
| Depth                 |                  |           |
| Table                 |                  |           |
| Girdle                | Medium (Faceted) |           |
| Culet                 |                  |           |
| Polish                |                  |           |
| Symmetry              |                  |           |
| Fluorescence          |                  |           |

**Comments:**  
This Laboratory Grown Diamond was  
created by Chemical Vapor Deposition  
(CVD) growth process.