



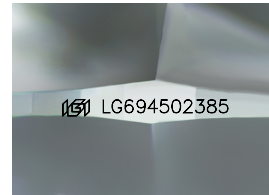
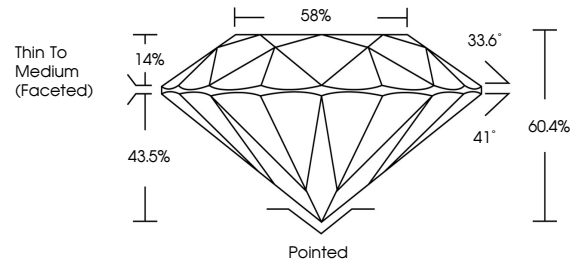
**INTERNATIONAL  
GEMOLOGICAL  
INSTITUTE**

**ELECTRONIC COPY**

## LABORATORY GROWN DIAMOND REPORT

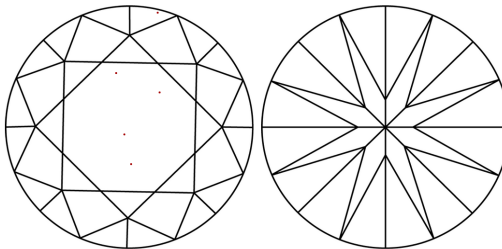
LG694502385  
Report verification at [igi.org](https://igi.org)

## PROPORTIONS



Sample Image Used

## CLARITY CHARACTERISTICS



## KEY TO SYMBOLS

Red symbols indicate internal characteristics.  
Green symbols indicate external characteristics.

## COLOR

D E F G H I J      Faint      Very Light      Light

## CLARITY

IF                      WS<sup>1-2</sup>                      VS<sup>1-2</sup>                      SI<sup>1-2</sup>                      I<sup>1-3</sup>

Internally Flawless	Very Very Slightly Included	Very Slightly Included	Slightly Included	Included
------------------------	--------------------------------	---------------------------	----------------------	----------



© IGI 2020, International Gemological Institute

FD - 10 20

**www.igi.org**

LABORATORY GROWN DIAMOND REPORT



March 27, 2025

IGI Report Number **LG694502385**

Description	LABORATORY GROWN DIAMOND
-------------	--------------------------

Shape and Cutting Style **ROUND BRILLIANT**

Measurements	6.70 - 6.72 X 4.05 MM
--------------	-----------------------

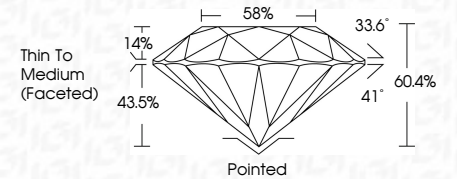
## GRADING RESULTS

Carat Weight **1.10 CARAT**

Color Grade D

Clarity Grade **VVS 2**

Cut Grade **IDEAL**



### ADDITIONAL GRADING INFORMATION

Polish **EXCELLENT**Symmetry **EXCELLENT**Fluorescence **NONE**Inscription(s)  LG694502385

Comments: This Laboratory Grown Diamond was created by Chemical Vapor Deposition (CVD) growth process.  
Type IIa



IGI

March 27, 2025	6.70 - 6.72 X 4.05 MM	1.10 CARAT	D
IGI Report No LG945620385	Carat Weight		VVS 2
ROUND BRILLIANT	Color Grade		IDEAL
	Clarity Grade		60.6%
	Cut Grade		58%
	Depth		Thin to Medium
	Table		(Faceted)
	Girdle		Poished
			EXCELLENT
	Symmetry		EXCELLENT
	Fluorescence		NONE
	Inscriptions(s)		IGI LG945620385
	Comments:		
			This Laboratory Grown Diamond was created by Chemical Vapor Deposition (CVD) growth process.
			Type IId