



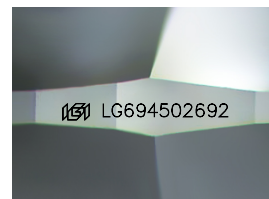
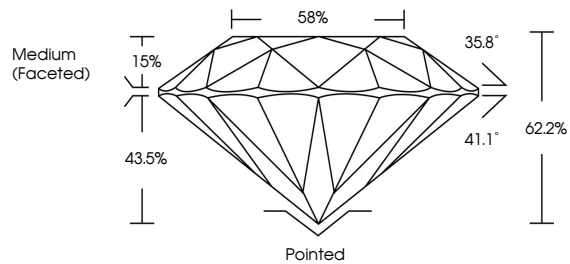
**INTERNATIONAL
GEMOLOGICAL
INSTITUTE**

ELECTRONIC COPY

LABORATORY GROWN DIAMOND REPORT

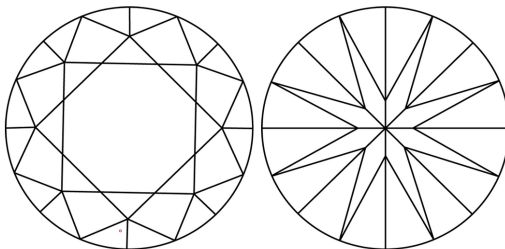
LG694502692
Report verification at igi.org

PROPORTIONS



Sample Image Used

CLARITY CHARACTERISTICS



KEY TO SYMBOLS

Red symbols indicate internal characteristics.
Green symbols indicate external characteristics.

COLOR

D E F G H I J Faint Very Light Light

CLARITY

IF WS¹⁻² VS¹⁻² SI¹⁻² |¹⁻³

Internally Flawless	Very Very Slightly Included	Very Slightly Included	Slightly Included	Included
------------------------	--------------------------------	---------------------------	----------------------	----------



March 25, 2025

IGI Report Number **LG694502692**

Description	LABORATORY GROWN DIAMOND
-------------	--------------------------

Shape and Cutting Style **ROUND BRILLIANT**

Measurements 7.59 - 7.62 X 4.73 MM

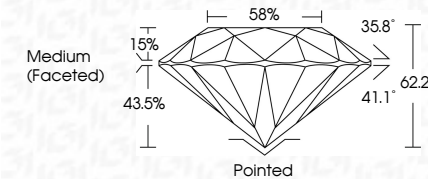
GRADING RESULTS

Carat Weight **1.69 CARAT**

Color Grade	E
-------------	---

Clarity Grade **VVS 2**

Cut Grade **IDEAL**



ADDITIONAL GRADING INFORMATION

Polish **EXCELLENCE**Symmetry **EXCELLENCE**

Fluorescence NONI

Inscription(s) LG69450269

Comments: This Laboratory Grown Diamond was created by Chemical Vapor Deposition (CVD) growth process.
Type IIa



IG



© IGI 2020, International Gemological Institute

FD - 10 20

www.igi.org

THIS DOCUMENT WAS PRODUCED WITH THE FOLLOWING SECURITY MEASURES: SPECIAL DOCUMENT PAPER, INK SCREENS, WATERMARK, PERMANENT DESIGN, NO GLOSS, AND COLOR SECURITY FEATURES NOT APPLICABLE AND NOT ENGAGED. SUCH MEASURES PREVENT REPRODUCTION OF THIS DOCUMENT BY ANY MEANS.

March 25, 2025	G1 Report No LG594622692
ROUND BRILLIANT	
1.59 - 7.62 X 4.73 MM	
Carat Weight	1.69 CARAT
Color Grade	VVS 2
Cut Grade	IDEAL
Table	62.2%
Girdle	55%
	Medium Faceted
Culet	Pointed
Polish	EXCELLENT
Symmetry	EXCELLENT
Fluorescence	NONE
Inscriptions(s)	4891 LG594622692
Comments: Treated by Chemical Vapor Deposition CVD growth process. Type IIA	