

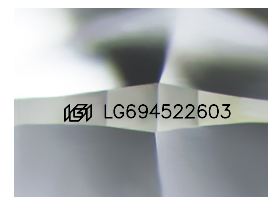
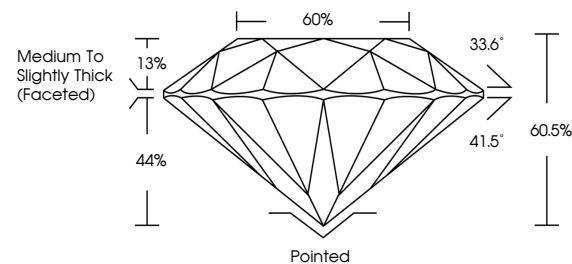


ELECTRONIC COPY

LABORATORY GROWN DIAMOND REPORT

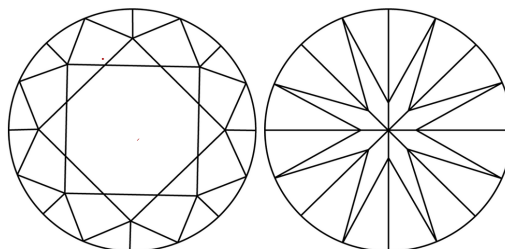
LG694522603
Report verification at igi.org

PROPORTIONS



Sample Image Used

CLARITY CHARACTERISTICS



KEY TO SYMBOLS

Red symbols indicate internal characteristics.
Green symbols indicate external characteristics.

COLOR

D E F G H I J Faint Very Light Light

CLARITY

IF WS¹⁻² VS¹⁻² SI¹⁻² |¹⁻³

Internally Flawless	Very Very Slightly Included	Very Slightly Included	Slightly Included	Included
------------------------	--------------------------------	---------------------------	----------------------	----------



© IGI 2020, International Gemological Institute

FD - 10 20

www.igi.org

LABORATORY GROWN DIAMOND REPORT



March 26, 2025

IGI Report Number **LG694522603**Description **LABORATORY GROWN DIAMOND**Shape and Cutting Style **ROUND BRILLIANT**

Measurements 10.27 - 10.34 X 6.23 MM

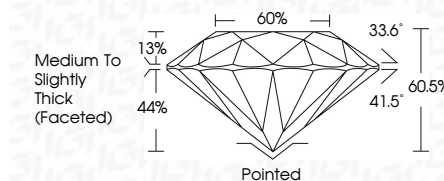
GRADING RESULTS

Carat Weight 4.02 CARATS

Color Grade

Clarity Grade WS 2

Cut Grade **IDEAL**



ADDITIONAL GRADING INFORMATION

Polish EXCELLENT

Symmetry **EXCELLENT**Fluorescence **NONE**Inscription(s) LG694522603

Comments: This Laboratory Grown Diamond was created by Chemical Vapor Deposition (CVD) growth process.

Type IIa



March 26, 2026	GI Report No. LG94622603	4.02 CARATS	E	VVS 2	IDEAL	60.5%	65%	Medium to Slightly Thick (Faceted)	Polished	Excellent	EXCELLENT	NONE	lg91 LG94622603
ROUND BRILLIANT	10.27 - 10.34 X 6.28 MM	Color Weight	Color Grade	Clarity Grade	Depth	Table	Girdle		Culet	Polish	Symmetry	Fluorescence	Inscriptions(s)
<p>Comments:</p> <p>This Laboratory Grown Diamond was tested using the Laser Vapor Deposition (LVD) growth process. Type IIG</p>													