

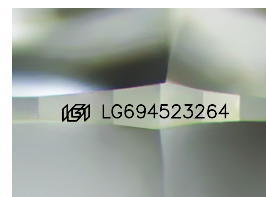
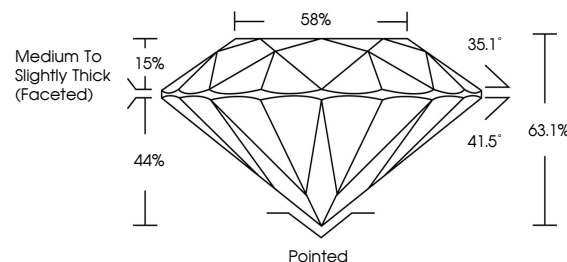


ELECTRONIC COPY

LABORATORY GROWN DIAMOND REPORT

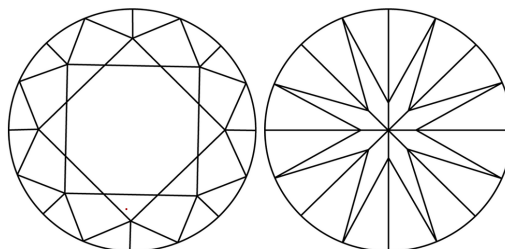
LG694523264
Report verification at lgi.org

PROPORTIONS



Sample Image Used

CLARITY CHARACTERISTICS



KEY TO SYMBOLS

Red symbols indicate internal characteristics.
Green symbols indicate external characteristics.

COLOR

D E F G H I J Faint Very Light Light

CLARITY

IF WS¹⁻² VS¹⁻² SI¹⁻² |¹⁻³

Internally Flawless	Very Very Slightly Included	Very Slightly Included	Slightly Included	Included
------------------------	--------------------------------	---------------------------	----------------------	----------



© IGI 2020, International Gemological Institute

FD - 10 20

www.igi.org

LABORATORY GROWN DIAMOND REPORT



March 26, 2025

IGI Report Number **LG694523264**Description **LABORATORY GROWN DIAMOND**Shape and Cutting Style **ROUND BRILLIANT**

Measurements 6.51 - 6.54 X 4.12 MM

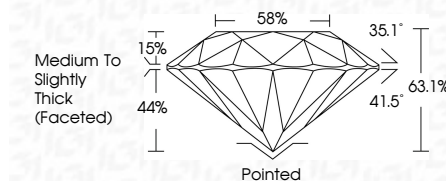
GRADING RESULTS

Carat Weight 1.08 CARAT

Color Grade E

Clarity Grade WS 2

Cut Grade **EXCELLENT**



ADDITIONAL GRADING INFORMATION

Polish **EXCELLENT**Symmetry **EXCELLENT**Fluorescence **NONE**Inscription(s) LG694523264

Comments: This Laboratory Grown Diamond was created by Chemical Vapor Deposition (CVD) growth process.
Type IIa



March 26, 2025	GI Report No. LG49423244	1.08 CARAT	E	VVS 2	EXCELLENT	63.1%	89%	Medium to Slightly Thick (Faceted)	Pointed	EXCELLENT	EXCELLENT	NONE	#69 LG49423244	Comments: This Laboratory Grown Diamond was created by Chemical Vapor Deposition (CVD) growth process, Type IIa
ROUND BRILLIANT	4.51 - 4.64 X 4.12 MM	Color Weight	Color Grade	Clarity Grade	Cut Grade	Depth	Table	Girdle	Culet	Symmetry	Fluorescence	Inclusions(s)		