



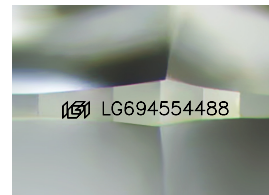
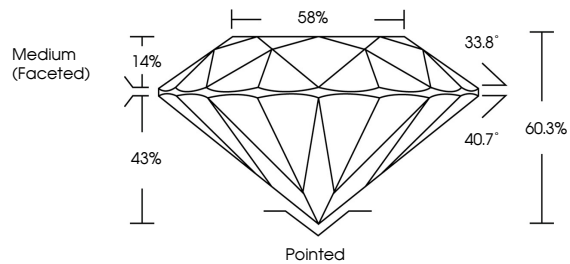
**INTERNATIONAL
GEMOLOGICAL
INSTITUTE**

ELECTRONIC COPY

LABORATORY GROWN DIAMOND REPORT

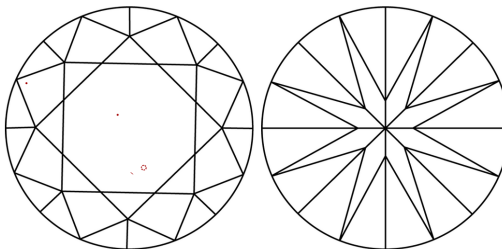
LG694554488
Report verification at [igi.org](https://www.igi.org)

PROPORTIONS



Sample Image Used

CLARITY CHARACTERISTICS



KEY TO SYMBOLS

Red symbols indicate internal characteristics.
Green symbols indicate external characteristics.

COLOR

D E F G H I J Faint Very Light Light

CLARITY

IF WS¹⁻² VS¹⁻² SI¹⁻² |¹⁻³

Internally Flawless	Very Very Slightly Included	Very Slightly Included	Slightly Included	Included
------------------------	--------------------------------	---------------------------	----------------------	----------



© IGI 2020, International Gemological Institute

FD - 10 20

LABORATORY GROWN DIAMOND REPORT



March 27, 2025

IGI Report Number **LG694554488**

Description	LABORATORY GROWN DIAMOND
-------------	--------------------------

Shape and Cutting Style **ROUND BRILLIANT**

Measurements	11.07 - 11.12 X 6.69 MM
--------------	-------------------------

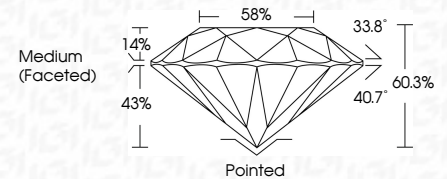
GRADING RESULTS

Carat Weight **5.06 CARATS**

Color Grade **E**

Clarity Grade **VVS 2**

Cut Grade **IDEAL**



ADDITIONAL GRADING INFORMATION

Polish EXCELLENT

Symmetry **EXCELLENT**

Fluorescence **NONE**Inscription(s) LG694554488

Comments: This Laboratory Grown Diamond was created by Chemical Vapor Deposition (CVD) growth process.
Type IIa



IGI

March 27, 2025	GI Report No. LG9454488	
ROUND BRILLIANT	5.06 CARATS	
11.07 x 11.12 x 6.69 MM	E	
Color Grade	VS 2	
Clarity Grade	IDEAL	
Cut Grade	60.3%	
Depth	59%	
Table	Medium (Faced)	
Girdle	Pointed	
Culet	EXCELLENT	
Polish	EXCELLENT	
Symmetry	NONE	
Fluorescence	f891 LG9454488	
Inscription(s)		
Comments:		
The Laboratory Grown Diamond was created by Chemical Vapor Deposition (CVD) growth process.		
Type IIA		