



**INTERNATIONAL
GEMOLOGICAL
INSTITUTE**

ELECTRONIC COPY

LG694576238
Report verification at [igi.org](https://www.igi.org)

LABORATORY GROWN DIAMOND REPORT



March 31, 2025

IGI Report Number **LG694576238**

Description	LABORATORY GROWN DIAMOND
-------------	--------------------------

Shape and Cutting Style **ROUND BRILLIANT**

Measurements 9.07 - 9.11 X 5.50 MM

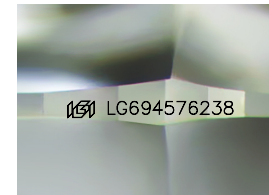
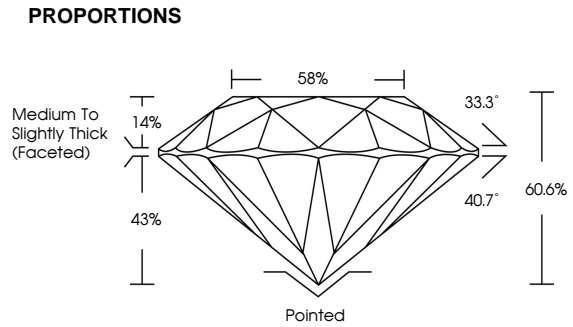
GRADING RESULTS

Carat Weight **2.81 CARATS**

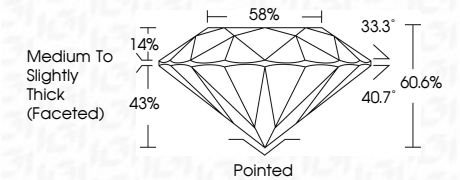
Color Grade	F
-------------	---

Clarity Grade VS 1

Cut Grade **IDEAL**



Sample Image Used



COLOR

D E F G H I J Faint Very Light Light

CLARITY

IF WS¹⁻² VS¹⁻² SI¹⁻² I¹⁻³

Internally Flawless	Very Very Slightly Included	Very Slightly Included	Slightly Included	Included
------------------------	--------------------------------	---------------------------	----------------------	----------



© IGI 2020, International Gemological Institute

FD - 10 20



THIS DOCUMENT WAS PRODUCED WITH THE FOLLOWING SECURITY MEASURES: SPECIAL DOCUMENT PAPER, INK SCREENS, WATERMARK BACKGROUND DESIGNS, HOLOGRAM AND OTHER SECURITY FEATURES NOT LISTED AND DO EXCEED DOCUMENT SECURITY INDUSTRY GUIDELINES



IGI

March 31, 2026	GI Report No. LG946572938
ROUND BRILLIANT	
2.07 x .911 X 5.50 MM	2.81 CARATS
Color Grade	F
Clarity Grade	VS 1
Cut Grade	IDEAL
Depth	60.6%
Table	85%
Girdle	Medium to slightly thick (Facing)
Culet	Pointed
Polish	EXCELLENT
Symmetry	EXCELLENT
Fluorescence	NONE
Inscription(s)	689 LG946572938
<p>Comments:</p> <p>This Laboratory Grown Diamond was created by Chemical Vapor Deposition (CVD) growth process.</p> <p>Type Iia</p>	