

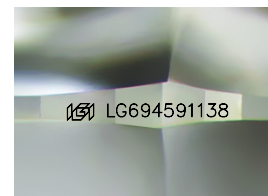
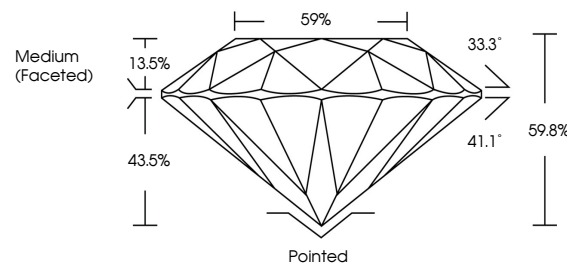


ELECTRONIC COPY

LABORATORY GROWN DIAMOND REPORT

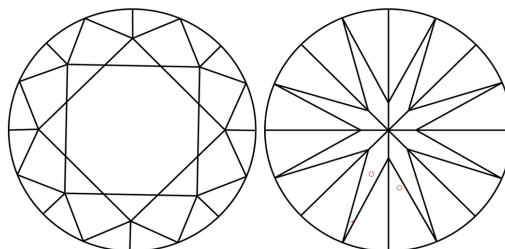
LG694591138
Report verification at igi.org

PROPORTIONS



Sample Image Used

CLARITY CHARACTERISTICS



KEY TO SYMBOLS

Red symbols indicate internal characteristics.
Green symbols indicate external characteristics.

COLOR

D E F G H I J Faint Very Light Light

CLARITY

IF WS¹⁻² VS¹⁻² S¹⁻² |¹⁻³

Internally Flawless	Very Very Slightly Included	Very Slightly Included	Slightly Included	Included
------------------------	--------------------------------	---------------------------	----------------------	----------



© IGI 2020, International Gemological Institute

FD - 10 20

www.igi.org

LABORATORY GROWN DIAMOND REPORT



May 7, 2025

IGI Report Number **LG694591138**Description **LABORATORY GROWN DIAMOND**Shape and Cutting Style **ROUND BRILLIANT**

Measurements 7.84 - 7.88 X 4.70 MM

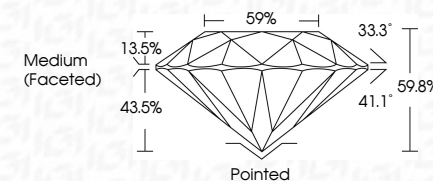
GRADING RESULTS

Carat Weight **1.74 CARAT**

Color Grade	D
-------------	---

Clarity Grade VVS 1

Cut Grade **IDEAL**



ADDITIONAL GRADING INFORMATION

Polish **EXCELLENT**Symmetry **EXCELLENT**Fluorescence **NONE**Inscription(s) LG694591138

Comments: As Grown - No indication of post-growth treatment.

This Laboratory Grown Diamond was created by High Pressure High Temperature (HPHT) growth process.
Type II



May 7, 2025	Report No LG564591138	1.74 CARAT
ROUND BRILLIANT		D
7.64 - 7.68 X 4.70 MM		VVS 1
Color	Clarity Grade	IDEAL
	Carat Weight	59.8%
	Color Grade	59%
	Depth	Medium (Faced)
	Table	
	Girdle	
	Culet	Polished
	Polish	EXCELLENT
	Symmetry	EXCELLENT
	Fluorescence	NONE
	Inscriptions(s)	1691 LG564591138
Comments: As Grown - No indication of post-growth treatment. This Laboratory Grown Diamond was created by High Pressure High Temperature (HPHT) growth process. Type II		