

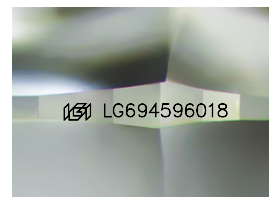
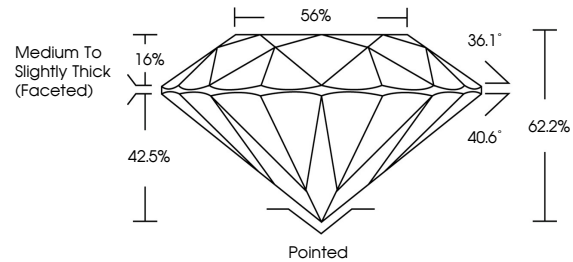


**INTERNATIONAL
GEMOLOGICAL
INSTITUTE**

ELECTRONIC COPY

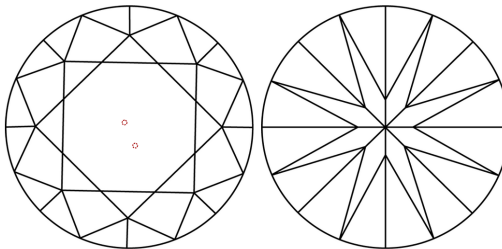
LG694596018
Report verification at igi.org

PROPORTIONS



Sample Image Used

CLARITY CHARACTERISTICS



KEY TO SYMBOLS

Red symbols indicate internal characteristics.
Green symbols indicate external characteristics.

COLOR

D E F G H I J Faint Very Light Light

CLARITY

IF WS¹⁻² VS¹⁻² SI¹⁻² I¹⁻³

Internally Flawless	Very Very Slightly Included	Very Slightly Included	Slightly Included	Included
------------------------	--------------------------------	---------------------------	----------------------	----------



© IGI 2020, International Gemological Institute

FD - 10 20

www.igi.org

LABORATORY GROWN DIAMOND REPORT



March 31, 2025

IGI Report Number **LG694596018**

Description	LABORATORY GROWN DIAMOND
-------------	--------------------------

Shape and Cutting Style **ROUND BRILLIANT**

Measurements 7.95 - 8.03 X 4.97 MM

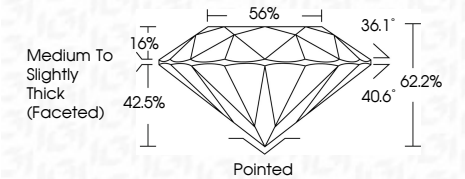
GRADING RESULTS

Carat Weight 1.96 CARAT

Color Grade D

Clarity Grade VS 1

Cut Grade **IDEAL**



ADDITIONAL GRADING INFORMATION

Polish **EXCELLENT**Symmetry **EXCELLENT**Fluorescence **NONE**Inscription(s) 131 LG694596018

Comments: This Laboratory Grown Diamond was created by Chemical Vapor Deposition (CVD) growth process.
Type IIa



IGI

March 31, 2025	7.95 - 8.03 X 4.97 MM	1.06 CARAT	D
Report No. LG59495018	Carat Weight		
ROUND Brilliant	Color Grade		
	Clarity Grade		VS 1
	Cut Grade		IDEXAL
	Depth		62.2%
	Table		66%
	Girdle		Medium to Slightly Thick (Faceted)
	Culet		Polished
	Polish		EXCELLENT
	Symmetry		EXCELLENT
	Fluorescence		NONE
	Inclusions (s)		881 LG59495018
	Comments:		
			This Laboratory Grown Diamond was created by Chemical Vapor Deposition (CVD) growth process.
			Type IId