

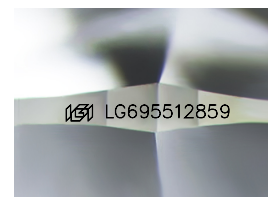
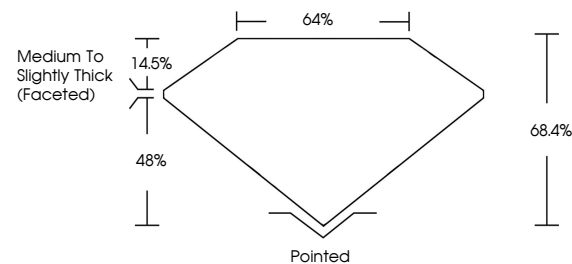


ELECTRONIC COPY

LABORATORY GROWN DIAMOND REPORT

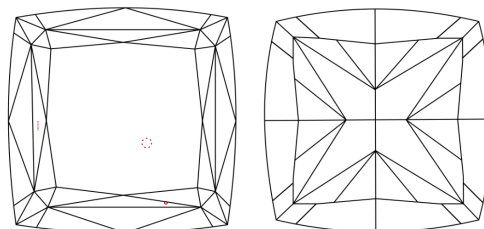
LG695512859
Report verification at igi.org

PROPORTIONS



Sample Image Used

CLARITY CHARACTERISTICS



KEY TO SYMBOLS

Red symbols indicate internal characteristics.
Green symbols indicate external characteristics.

COLOR

D E F G H I J Faint Very Light Light

CLARITY

IF	VS ¹⁻²	VS ¹⁻²	SI ¹⁻²	I ¹⁻³
Internally Flawless	Very Very Slightly Included	Very Slightly Included	Slightly Included	Included

LABORATORY GROWN DIAMOND REPORT



April 17, 2025

IGI Report Number **LG695512859**

Description	LABORATORY GROWN DIAMOND
-------------	--------------------------

Shape and Cutting Style **SQUARE CUSHION MODIFIED
BRILLIANT**

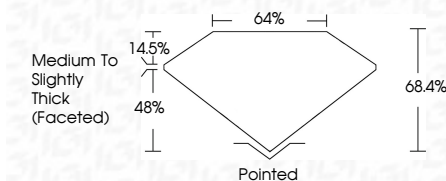
Measurements **6.68 X 6.64 X 4.54 MM**

GRADING RESULTS

Carat Weight **1.85 CARAT**

Color Grade **FANCY PINKISH BROWN**

Clarity Grade VS 1



ADDITIONAL GRADING INFORMATION

Polish **EXCELLENT**Symmetry **EXCELLENT**

Fluorescence SLIGHT

Inscription(s) LG695512859

Comments: This Laboratory Grown Diamond was created by Chemical Vapor Deposition (CVD) growth process.
Indications of post-growth treatment.



© IGI 2020, International Gemological Institute

FD - 10 20

www.igi.org

THIS DOCUMENT WAS PRODUCED WITH THE FOLLOWING SECURITY MEASURES: SPECIAL DOCUMENT PAPER, INK SCREENS, WATERMARK BACKGROUND DESIGNS, HOLOGRAM AND OTHER SECURITY FEATURES NOT LISTED AND DO EXCEED DOCUMENT SECURITY INDUSTRY GUIDELINES

April 17, 2025	Report No. LG49512989	SQUARE CUBION MODIFIED BRILLIANT	1.85 CARAT	VS 1	66.6%	0.6%	Medium to Slightly Thick (Faceted)	Partially	EXCELLENT	EXCELLENT	SLIGHT	689 LG49512989	<p>Comments:</p> <p>Mineral Growth Diamond was identified by Chemical Vapor Deposition (CVD) growth process.</p> <p>Indications of post-growth treatment.</p>
		SQUARE CUBION MODIFIED BRILLIANT	1.85 CARAT	FANCY PINKISH BROWN	VS 1	66.6%	0.6%	Medium to Slightly Thick (Faceted)	EXCELLENT	EXCELLENT	SLIGHT	689 LG49512989	