



**ELECTRONIC COPY**

LG696555586  
Report verification at igi.org



April 4, 2025

IGI Report Number **LG696555586**

Description **LABORATORY GROWN DIAMOND**

Shape and Cutting Style **ROUND BRILLIANT**

Measurements **6.78 - 6.81 X 4.27 MM**

**GRADING RESULTS**

Carat Weight **1.23 CARAT**

Color Grade **D**

Clarity Grade **VS 1**

Cut Grade **EXCELLENT**

April 4, 2025  
IGI Report Number **LG696555586**  
Description **LABORATORY GROWN DIAMOND**  
Shape and Cutting Style **ROUND BRILLIANT**  
Measurements **6.78 - 6.81 X 4.27 MM**

**GRADING RESULTS**

Carat Weight **1.23 CARAT**

Color Grade **D**

Clarity Grade **VS 1**

Cut Grade **EXCELLENT**

**ADDITIONAL GRADING INFORMATION**

Polish **EXCELLENT**

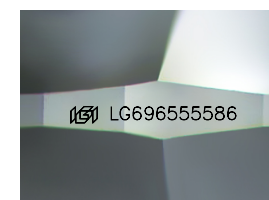
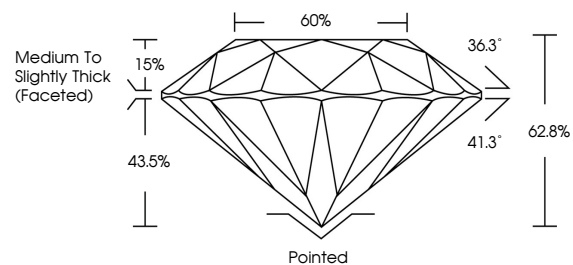
Symmetry **EXCELLENT**

Fluorescence **NONE**

Inscription(s) **LG696555586**

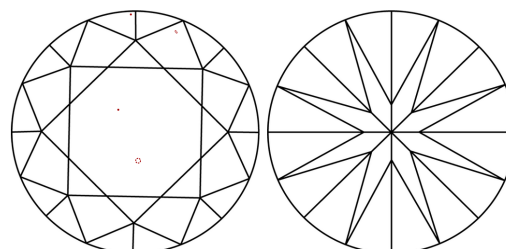
Comments: This Laboratory Grown Diamond was created by Chemical Vapor Deposition (CVD) growth process.  
Type IIa

**PROPORTIONS**



Sample Image Used

**CLARITY CHARACTERISTICS**



**KEY TO SYMBOLS**

Red symbols indicate internal characteristics.  
Green symbols indicate external characteristics.

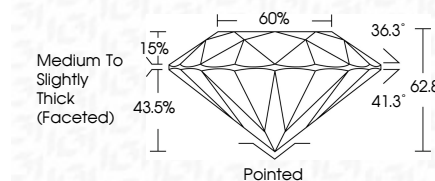
**COLOR**

D E F G H I J Faint Very Light Light

**CLARITY**

IF WS<sup>1-2</sup> VS<sup>1-2</sup> SI<sup>1-2</sup> I<sup>1-3</sup>

Internally Flawless Very Very Slightly Included Very Slightly Included Slightly Included Included



**ADDITIONAL GRADING INFORMATION**

Polish **EXCELLENT**

Symmetry **EXCELLENT**

Fluorescence **NONE**

Inscription(s) **LG696555586**

Comments: This Laboratory Grown Diamond was created by Chemical Vapor Deposition (CVD) growth process.  
Type IIa



**IGI**



April 4, 2025	IGI Report No LG696555586	1.23 CARAT	D	VS 1	62.8%	60%	Medium To Slightly Thick (Faceted)	Pointed	EXCELLENT	EXCELLENT	NONE	LG696555586							
ROUND BRILLIANT	6.78 - 6.81 X 4.27 MM	Color Grade	EXCELLENT	Cut Grade	EXCELLENT	Depth	62.8%	Table	60%	Grade	Medium To Slightly Thick (Faceted)	Polish	EXCELLENT	Symmetry	EXCELLENT	Fluorescence	NONE	Inscription(s)	LG696555586

Comments: This Laboratory Grown Diamond was created by Chemical Vapor Deposition (CVD) growth process.  
Type IIa