

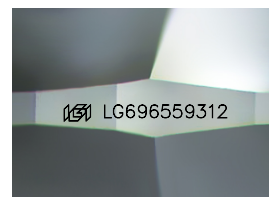
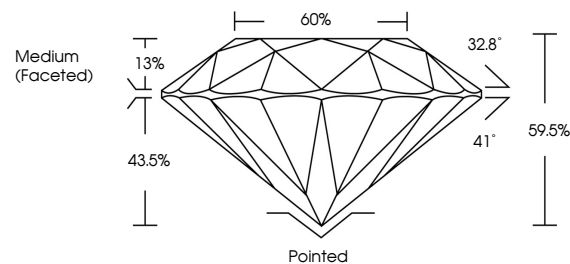


**ELECTRONIC COPY**

## LABORATORY GROWN DIAMOND REPORT

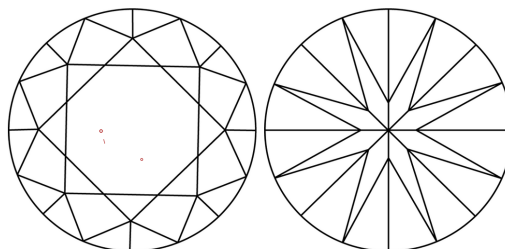
LG696559312  
Report verification at [lgi.org](https://lgi.org)

## PROPORTIONS



Sample Image Used

## CLARITY CHARACTERISTICS



## KEY TO SYMBOLS

Red symbols indicate internal characteristics.  
Green symbols indicate external characteristics.

## COLOR

D E F G H I J Faint Very Light Light

## CLARITY

IF WS<sup>1-2</sup> VS<sup>1-2</sup> SI<sup>1-2</sup> |<sup>1-3</sup>

Internally Flawless	Very Very Slightly Included	Very Slightly Included	Slightly Included	Included
------------------------	--------------------------------	---------------------------	----------------------	----------

## LABORATORY GROWN DIAMOND REPORT



April 25, 2025

IGI Report Number **LG696559312**Description **LABORATORY GROWN DIAMOND**Shape and Cutting Style **ROUND BRILLIANT**

Measurements 7.41 - 7.46 X 4.43 MM

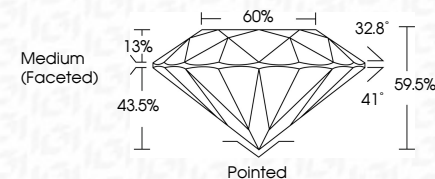
## GRADING RESULTS

Carat Weight **1.48 CARAT**

Color Grade **FANCY VIVID BLUE**

Clarity Grade VS 1

Cut Grade **IDEAL**



### ADDITIONAL GRADING INFORMATION

Polish **EXCELLENT**Symmetry **EXCELLENT**Fluorescence **NONE**Inscription(s)  LG696559312

Comments: This Laboratory Grown Diamond was created by Chemical Vapor Deposition (CVD) growth process.

Indications of post-growth treatment.



IG



© IGI 2020, International Gemological Institute

FD - 10 20

**www.igi.org**

THIS DOCUMENT WAS PRODUCED WITH THE FOLLOWING SECURITY MEASURES: SPECIAL DOCUMENT PAPER, INK SCREENS, WATERMARK, BACKGROUND DESIGNS, HOLOGRAM AND OTHER SECURITY FEATURES NOT LISTED AND DO EXCEED DOCUMENT SECURITY INDUSTRY GUIDELINES

April 25, 2025  
GI Report No LG696559312  
ROUND BRILLIANT

7.41 - 7.46 X 4.43 MM	1.48 CARAT
Carat Weight	
Color Grade	FANCY VIVID BLUE
Clarity Grade	VS 1
Cut Grade	IDEAL
Depth	59.5%
Table	60%
Girdle	Medium (Faceted)

Pointed	EXCELLENT	EXCELLENT	NONE
Culet			
Polish			
Symmetry			
Fluorescence			

**Comments:**  
This Laboratory Grown Diamond was created by Chemical Vapor Deposition (CVD) growth process.  
indications of post-growth treatment