

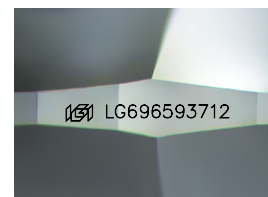
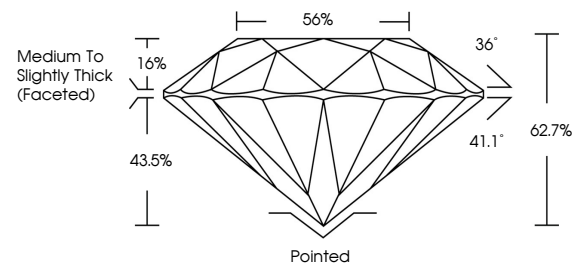


**ELECTRONIC COPY**

## LABORATORY GROWN DIAMOND REPORT

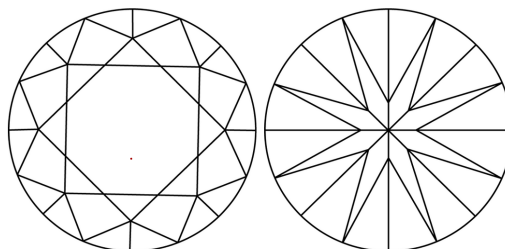
LG696593712  
Report verification at [igi.org](https://igi.org)

## PROPORTIONS



Sample Image Used

## CLARITY CHARACTERISTICS



### KEY TO SYMBOLS

Red symbols indicate internal characteristics.  
Green symbols indicate external characteristics.

## COLOR

D E F G H I J Faint Very Light Light

## CLARITY

IF WS<sup>1-2</sup> VS<sup>1-2</sup> SI<sup>1-2</sup> |<sup>1-3</sup>

Internally Flawless	Very Very Slightly Included	Very Slightly Included	Slightly Included	Included
------------------------	--------------------------------	---------------------------	----------------------	----------



© IGI 2020, International Gemological Institute

FD - 10 20

**www.igi.org**

## LABORATORY GROWN DIAMOND REPORT



April 7, 2025

IGI Report Number **LG696593712**Description **LABORATORY GROWN DIAMOND**Shape and Cutting Style **ROUND BRILLIANT**

Measurements 6.59 - 6.63 X 4.13 MM

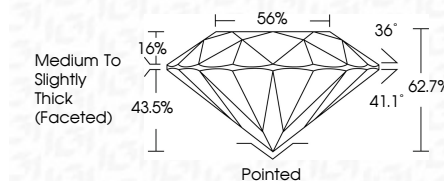
## GRADING RESULTS

Carat Weight 1.10 CARAT

Color Grade D

Clarity Grade WS 2

Cut Grade **EXCELLENT**



### ADDITIONAL GRADING INFORMATION

Polish **EXCELLENT**Symmetry **EXCELLENT**Fluorescence **NONE**Inscription(s)  LG696593712

Comments: This Laboratory Grown Diamond was created by Chemical Vapor Deposition (CVD) growth process.  
Type IIa



April 7, 2025	GI Report No. LG694569712	1.10 CARAT	VVS 2	62.7%	65%	Medium to slightly Thick (Faceted)	Pointed	EXCELLENT	NONE	#69 LG694569712	Comments: This Laboratory Grown Diamond was created by Chemical Vapor Deposition (CVD) growth process, Type IIa
ROUND BRILLIANT	6.59 - 6.68 X 4.13 MM	Color Grade	Clarity Grade	Cut Grade	Depth	Girdle	Culet	Symmetry	Inclusions(s)		
	Corat Weight				table						