



ELECTRONIC COPY

LABORATORY GROWN DIAMOND REPORT

April 9, 2025	
IGI Report Number	LG698519545
Description	LABORATORY GROWN DIAMOND
Shape and Cutting Style	ROUND BRILLIANT
Measurements	8.11 - 8.17 X 5.09 MM

GRADING RESULTS

Carat Weight	2.09 CARATS
Color Grade	D
Clarity Grade	VS 1
Cut Grade	IDEAL

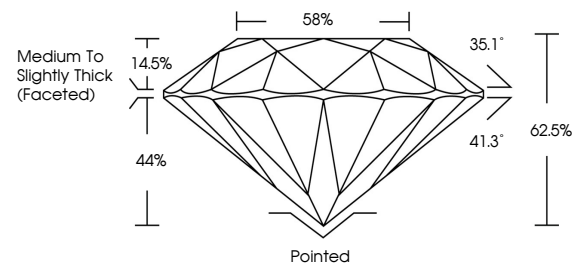
ADDITIONAL GRADING INFORMATION

Polish	EXCELLENT
Symmetry	EXCELLENT
Fluorescence	NONE
Inscription(s)	 LG698519545

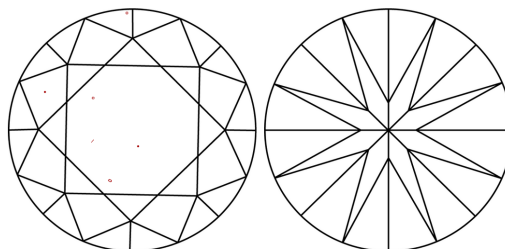
Comments: This Laboratory Grown Diamond was created by Chemical Vapor Deposition (CVD) growth process.
Type IIa

LG698519545
Report verification at igi.org

PROPORTIONS

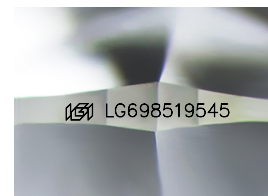


CLARITY CHARACTERISTICS



KEY TO SYMBOLS

Red symbols indicate internal characteristics.
Green symbols indicate external characteristics.



Sample Image Used

COLOR

D E F G H I J Faint Very Light Light

CLARITY

IF WS¹⁻² VS¹⁻² SI¹⁻² |¹⁻³

Internally Flawless	Very Very Slightly Included	Very Slightly Included	Slightly Included	Included
------------------------	--------------------------------	---------------------------	----------------------	----------

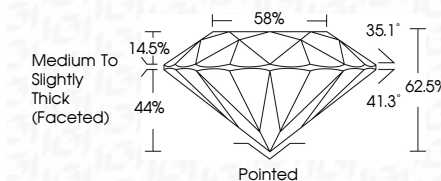
LABORATORY GROWN DIAMOND REPORT



April 9, 2025	
IGI Report Number	LG698519545
Description	LABORATORY GROWN DIAMOND
Shape and Cutting Style	ROUND BRILLIANT
Measurements	8.11 - 8.17 X 5.09 MM

GRADING RESULTS

Carat Weight	2.09 CARATS
Color Grade	D
Clarity Grade	VS 1
Cut Grade	IDEAL



ADDITIONAL GRADING INFORMATION

Polish	EXCELLENT
Symmetry	EXCELLENT
Fluorescence	NONE
Inscription(s)	 LG698519545
<p>Comments: This Laboratory Grown Diamond was created by Chemical Vapor Deposition (CVD) growth process.</p> <p>Type IIa</p>	



© IGI 2020, International Gemological Institute

FD - 10 20

www.igi.org



THIS DOCUMENT WAS PRODUCED WITH THE FOLLOWING SECURITY MEASURES: SPECIAL DOCUMENT PAPER, INK SCREENS, WATERMARK, BACKGROUND DESIGNS, HOLOGRAM AND OTHER SECURITY FEATURES NOT LISTED AND DO EXCEED DOCUMENT SECURITY INDUSTRY GUIDELINE

April 9, 2025
ICI Report No LG698519545
ROUND BRILLIANT

8.11 - 8.17 X 5.09 MM		2.09 CARATS	
Carat Weight		D	
Color Grade		VS 1	
Clarity Grade		IDEAL	
Cut Grade		62.5%	
Depth		58%	
Table		Medium to Slightly Thick (Faceted)	
Grille			
Culet		Pointed	
Polish		EXCELLENT	
Symmetry		EXCELLENT	
Fluorescence		NONE	

Comments:
This Laboratory Grown Diamond was created by Chemical Vapor Deposition (CVD) growth process.