

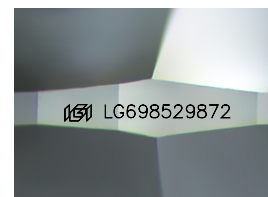
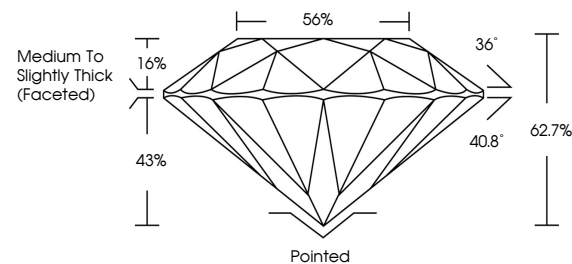


ELECTRONIC COPY

LABORATORY GROWN DIAMOND REPORT

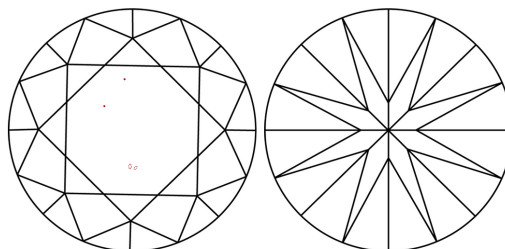
LG698529872
Report verification at igi.org

PROPORTIONS



Sample Image Used

CLARITY CHARACTERISTICS



KEY TO SYMBOLS

Red symbols indicate internal characteristics.
Green symbols indicate external characteristics.

COLOR

D E F G H I J Faint Very Light Light

CLARITY

IF WS¹⁻² VS¹⁻² SI¹⁻² |¹⁻³

Internally Flawless	Very Very Slightly Included	Very Slightly Included	Slightly Included	Included
------------------------	--------------------------------	---------------------------	----------------------	----------



© IGI 2020, International Gemological Institute

FD - 10 20

www.igi.org

LABORATORY GROWN DIAMOND REPORT



April 11, 2025

IGI Report Number **LG698529872**Description **LABORATORY GROWN DIAMOND**Shape and Cutting Style **ROUND BRILLIANT**

Measurements 8.12 - 8.15 X 5.10 MM

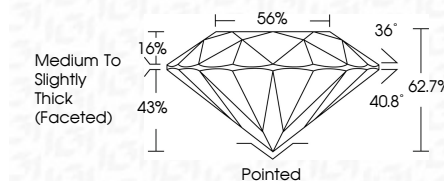
GRADING RESULTS

Carat Weight **2.08 CARATS**

Color Grade E

Clarity Grade VS 1

Cut Grade **EXCELLENT**



ADDITIONAL GRADING INFORMATION

Polish **EXCELLENT**Symmetry **EXCELLENT**Fluorescence **NONE**Inscription(s) LG698529872

Comments: This Laboratory Grown Diamond was created by Chemical Vapor Deposition (CVD) growth process.
Type IIa



	April 11, 2026	G Report No LG9852972	
	VIVID BRILLIANT	2.08 CARATS	E VS 1
	12 - 6.15 X 5.10 MM		EXCELLENT
	Color Grade		60%
	Cut Grade		Medium to Slightly Thick Facetted
	Clarity Grade		Pinkish EXCELLENT
	Depth		EXCELLENT
	Diamond Colorable		NONE
	Grain		(#) LG9852972
			Fluorescence
			Symmetry
			Polish
			Culet
			Compass:
			Laboratory Grown Diamond was created by Chemical Vapor Deposition (CVD) growth process.
			Type IIA