

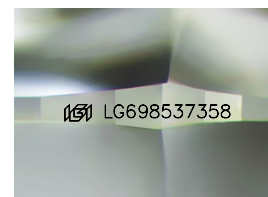
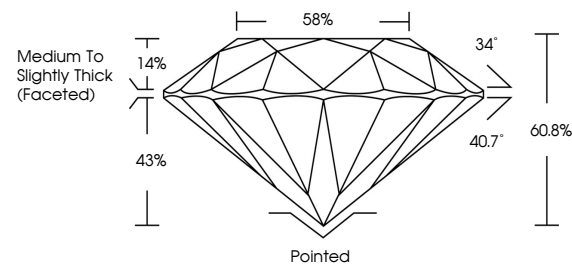


**ELECTRONIC COPY**

## LABORATORY GROWN DIAMOND REPORT

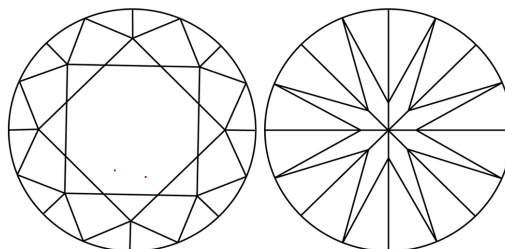
LG698537358  
Report verification at [igi.org](https://igi.org)

## PROPORTIONS



Sample Image Used

## CLARITY CHARACTERISTICS



## KEY TO SYMBOLS

Red symbols indicate internal characteristics.  
Green symbols indicate external characteristics.

## COLOR

D E F G H I J Faint Very Light Light

## CLARITY

IF WS<sup>1-2</sup> VS<sup>1-2</sup> SI<sup>1-2</sup> |<sup>1-3</sup>

Internally Flawless	Very Very Slightly Included	Very Slightly Included	Slightly Included	Included
------------------------	--------------------------------	---------------------------	----------------------	----------



© IGI 2020, International Gemological Institute

FD - 10 20

**www.igi.org**

## LABORATORY GROWN DIAMOND REPORT



April 11, 2025

IGI Report Number **LG698537358**

Description **LABORATORY GROWN DIAMOND**Shape and Cutting Style **ROUND BRILLIANT**

Measurements 10.27 - 10.35 X 6.26 MM

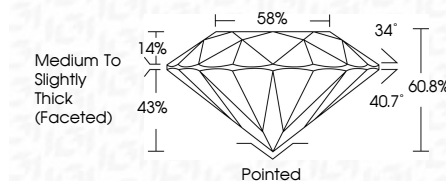
## GRADING RESULTS

Carat Weight **4.08 CARATS**

Color Grade	E
-------------	---

Clarity Grade VVS 2

Cut Grade **IDEAL**



### ADDITIONAL GRADING INFORMATION

Polish **EXCELLENT**Symmetry **EXCELLENT**Fluorescence **NONE**Inscription(s)  LG698537358

Comments: This Laboratory Grown Diamond was created by Chemical Vapor Deposition (CVD) growth process.  
Type IIa



April 11, 2025	G Report No LG098537358	408 CARATS	VVS 2	Polished	Symmetry Fluorescence None (SI) LG098537358	Comments: The Laboratory Grown Diamond was created by Chemical Vapor Deposition (CVD) growth process. type IIa
ROUND BRILLIANT	10.07 - 10.35 X 6.26 MM	Color Grade	IDEAL	EXCELLENT		
		Clarity Grade	60.6%	EXCELLENT		
		Cut Grade	89%	NONE		
		Depth	Medium to Slightly Thick (Faceted)			