



ELECTRONIC COPY

LABORATORY GROWN DIAMOND REPORT

April 11, 2025	
IGI Report Number	LG698553763
Description	LABORATORY GROWN DIAMOND
Shape and Cutting Style	ROUND BRILLIANT
Measurements	8.13 - 8.22 X 5.07 MM

GRADING RESULTS

Carat Weight	2.08 CARATS
Color Grade	E
Clarity Grade	VS 2
Cut Grade	IDEAL

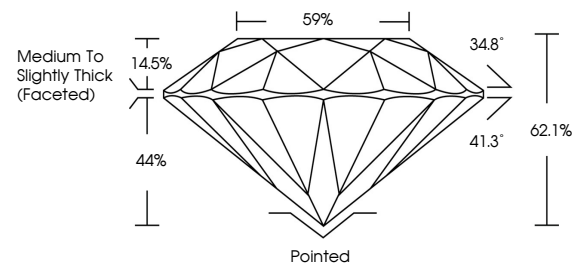
ADDITIONAL GRADING INFORMATION

Polish	EXCELLENT
Symmetry	EXCELLENT
Fluorescence	NONE
Inscription(s)	 LG698553763

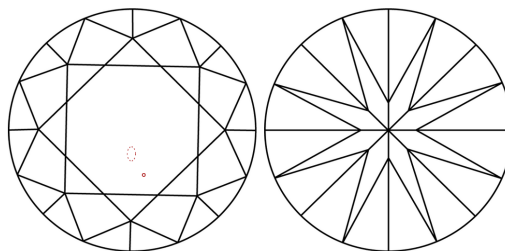
Comments: This Laboratory Grown Diamond was created by Chemical Vapor Deposition (CVD) growth process.
Type IIa

LG698553763
Report verification at igi.org

PROPORTIONS

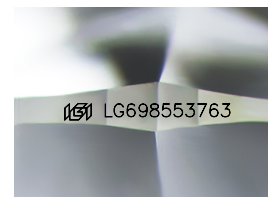


CLARITY CHARACTERISTICS



KEY TO SYMBOLS

Red symbols indicate internal characteristics.
Green symbols indicate external characteristics.



Sample Image Used

COLOR

D E F G H I J Faint Very Light Light

CLARITY

IF WS¹⁻² VS¹⁻² SI¹⁻² |¹⁻³

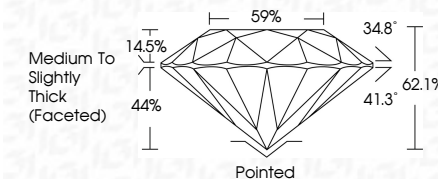
Internally Flawless	Very Very Slightly Included	Very Slightly Included	Slightly Included	Included
------------------------	--------------------------------	---------------------------	----------------------	----------



April 11, 2025	
IGI Report Number	LG698553763
Description	LABORATORY GROWN DIAMOND
Shape and Cutting Style	ROUND BRILLIANT
Measurements	8.13 - 8.22 X 5.07 MM

GRADING RESULTS

Carat Weight	2.08 CARATS
Color Grade	E
Clarity Grade	VS 2
Cut Grade	IDEAL



ADDITIONAL GRADING INFORMATION

Polish	EXCELLENT
Symmetry	EXCELLENT
Fluorescence	NONE
Inscription(s)	 LG698553763
Comments: This Laboratory Grown Diamond was created by Chemical Vapor Deposition (CVD) growth process.	
Type IIa	



© IGI 2020, International Gemological Institute

FD - 10 20



THIS DOCUMENT WAS PRODUCED WITH THE FOLLOWING SECURITY MEASURES: SPECIAL DOCUMENT PAPER, INK SCREENS, WATERMARK, BACKGROUND DESIGNS, HOLOGRAM AND OTHER SECURITY FEATURES NOT LISTED AND DO EXCEED DOCUMENT SECURITY INDUSTRY GUIDELINES

www.igi.org

