

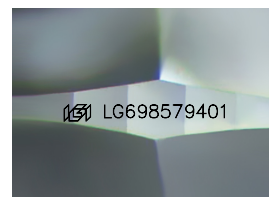
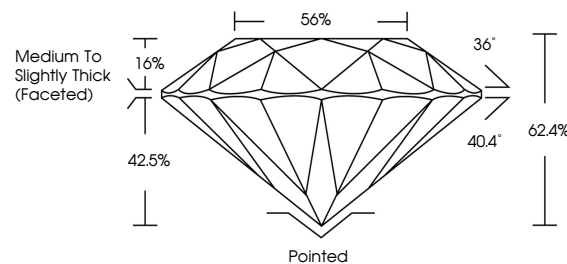


ELECTRONIC COPY

LABORATORY GROWN DIAMOND REPORT

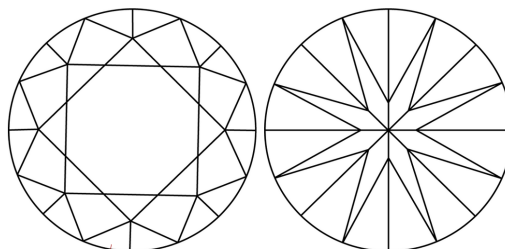
LG698579401
Report verification at lgi.org

PROPORTIONS



Sample Image Used

CLARITY CHARACTERISTICS



KEY TO SYMBOLS

Red symbols indicate internal characteristics.
Green symbols indicate external characteristics.

COLOR

D E F G H I J Faint Very Light Light

CLARITY

IF WS¹⁻² VS¹⁻² SI¹⁻² |¹⁻³

Internally Flawless	Very Very Slightly Included	Very Slightly Included	Slightly Included	Included
------------------------	--------------------------------	---------------------------	----------------------	----------

LABORATORY GROWN DIAMOND REPORT



June 13, 2025

IGI Report Number **LG698579401**Description **LABORATORY GROWN DIAMOND**Shape and Cutting Style **ROUND BRILLIANT**

Measurements 7.38 - 7.42 X 4.62 MM

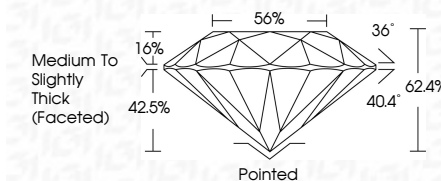
GRADING RESULTS

Carat Weight 1.58 CARAT

Color Grade D

Clarity Grade VS 1

Cut Grade **IDEAL**



ADDITIONAL GRADING INFORMATION

Polish **EXCELLENT**Symmetry **EXCELLENT**Fluorescence **NONE**Inscription(s) LG698579401

Comments: As Grown - No indication of post-growth treatment.

This Laboratory Grown Diamond was created by High Pressure High Temperature (HPHT) growth process.

Type II



© IGI 2020, International Gemological Institute

FD - 10 20

www.igi.org



THIS DOCUMENT WAS PRODUCED WITH THE FOLLOWING SECURITY MEASURES: SPECIAL DOCUMENT PAPER, INK SCREENS, WATERMARK, BACKGROUND DESIGNS, HOLOGRAM AND OTHER SECURITY FEATURES NOT LISTED AND DO EXCEED DOCUMENT SECURITY INDUSTRY GUIDELINES

June 13, 2025		IGI Report No. LG598579401	
ROUND BRILLIANT			
7.39 - 7.42 x 4.02 MM		1.58 CARAT	
Carat Weight	D	VS 1	
Color Grade		IDEAL	
Clarity Grade		62.4%	
Cut Grade		55%	
Depth		Medium to Slightly Thick (Peculiar)	
Table		Polished	
Grain		EXCELLENT	
Clouds		EXCELLENT	
Polish		NONE	
Symmetry		/G/ LG598579401	
Fluorescence			
Inscriptions(s)			
Comments:		Grown - No indication of post-growth treatment.	
		This Laboratory Grown Diamond was created by High Pressure High Temperature (HPHT) growth process.	