

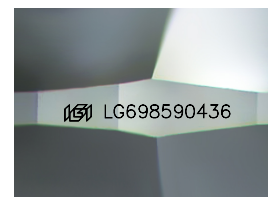
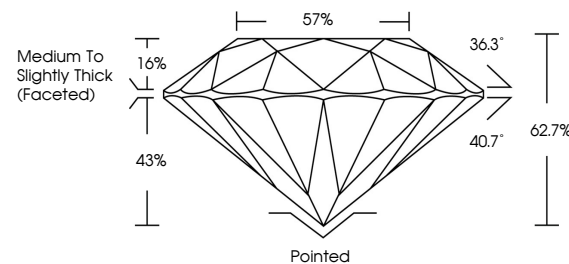


ELECTRONIC COPY

LABORATORY GROWN DIAMOND REPORT

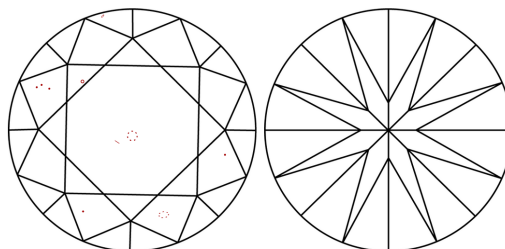
LG698590436
Report verification at igi.org

PROPORTIONS



Sample Image Used

CLARITY CHARACTERISTICS



KEY TO SYMBOLS

Red symbols indicate internal characteristics.
Green symbols indicate external characteristics.

COLOR

D E F G H I J Faint Very Light Light

CLARITY

IF WS¹⁻² VS¹⁻² SI¹⁻² |¹⁻³

Internally Flawless	Very Very Slightly Included	Very Slightly Included	Slightly Included	Included
------------------------	--------------------------------	---------------------------	----------------------	----------



April 17, 2025

IGI Report Number **LG698590436**

Description	LABORATORY GROWN DIAMOND
-------------	--------------------------

Shape and Cutting Style **ROUND BRILLIANT**

Measurements 8.08 - 8.13 X 5.09 MM

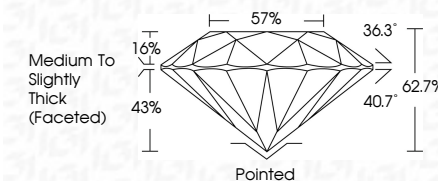
GRADING RESULTS

Carat Weight **2.09 CARATS**

Color Grade

Clarity Grade VS 1

Cut Grade **EXCELLENT**



ADDITIONAL GRADING INFORMATION

Polish EXCELLENT

Symmetry **EXCELLENT**Fluorescence **NONE**Inscription(s) LG698590436

Comments: This Laboratory Grown Diamond was created by Chemical Vapor Deposition (CVD) growth process.

Type IIa



© IGI 2020, International Gemological Institute

FD - 10 20

www.igi.org



THIS DOCUMENT WAS PRODUCED WITH THE FOLLOWING SECURITY MEASURES: SPECIAL DOCUMENT PAPER, INK SCREENS, WATERMARK, BACKGROUND DESIGNS, HOLOGRAM AND OTHER SECURITY FEATURES NOT LISTED AND DO EXCEED DOCUMENT SECURITY INDUSTRY GUIDELINES

April 17, 2025
GI Report No LG698590436
ROUND BRILLIANT

	D	VSI	%T		Patched
		EXCELLENT	62.7%		EXCELLENT
			57%		NONE
			Medium to slightly Thick (Faceted)		
			Culet		Symmetry
			Polish		Fluorescence

Comments:
This Laboratory Grown Diamond was created by Chemical Vapor Deposition (CVD) growth process.