

ELECTRONIC COPY

LABORATORY GROWN DIAMOND REPORT

April 15, 2025	
IGI Report Number	LG700507279
Description	LABORATORY GROWN DIAMOND
Shape and Cutting Style	ROUND BRILLIANT
Measurements	8.10 - 8.13 X 5.12 MM

GRADING RESULTS

Carat Weight	2.09 CARATS
Color Grade	F
Clarity Grade	VS 1
Cut Grade	EXCELLENT

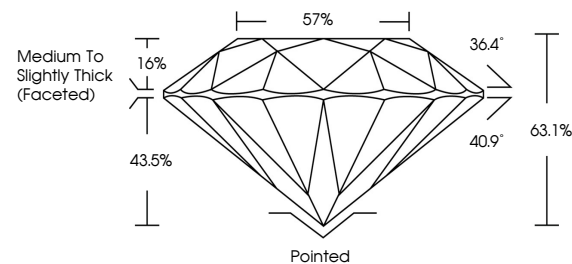
ADDITIONAL GRADING INFORMATION

Polish	EXCELLENT
Symmetry	EXCELLENT
Fluorescence	NONE
Inscription(s)	 LG700507279

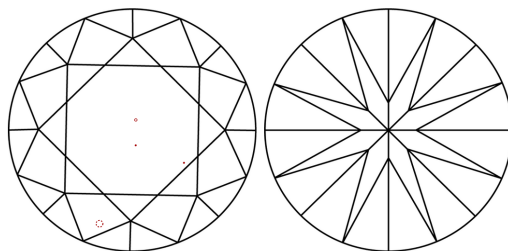
Comments: This Laboratory Grown Diamond was created by Chemical Vapor Deposition (CVD) growth process.
Type IIa

LG700507279
Report verification at igi.org

PROPORTIONS

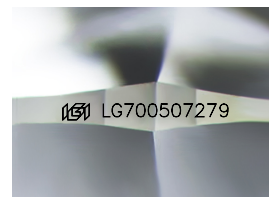


CLARITY CHARACTERISTICS



KEY TO SYMBOLS

Red symbols indicate internal characteristics.
Green symbols indicate external characteristics.



Sample Image Used

COLOR

D E F G H I J Faint Very Light Light

CLARITY

IF VS¹⁻² VS¹⁻² SI¹⁻² |¹⁻³

Internally Flawless	Very Very Slightly Included	Very Slightly Included	Slightly Included	Included
------------------------	--------------------------------	---------------------------	----------------------	----------

LABORATORY GROWN DIAMOND REPORT



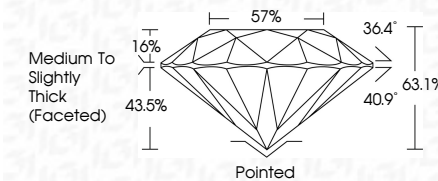
April 15, 2025	
IGI Report Number	LG700507279
Description	LABORATORY GROWN DIAMOND
Shape and Cutting Style	ROUND BRILLIANT
Measurements	8.10 - 8.13 X 5.12 MM

GRADING RESULTS

Carat Weight	2.09 CARATS
Color Grade	F
Clarity Grade	VS 1
Cut Grade	EXCELLENT

ADDITIONAL GRADING INFORMATION

Polish	EXCELLENT
Symmetry	EXCELLENT
Fluorescence	NONE
Inscription(s)	 LG700607279
<p>Comments: This Laboratory Grown Diamond was created by Chemical Vapor Deposition (CVD) growth process.</p> <p>Type IIa</p>	



© IGI 2020, International Gemological Institute

FD - 10 20

April 15, 2025	Medium Thick	Culet	Comments:
IGI Report No. L670507279		Polish	Chemically Grown Diamond
ROUND BRILLIANT		Symmetry	certified by Chemical Vapor
10.00 - 13 X 5.12 MM		Fluorescence	(CVD) growth process.
Carat Weight		Inscription(s)	Type Ila
Color Grade			
Clarity Grade			
Cut Grade			
Depth			
Table			
Girdle			