

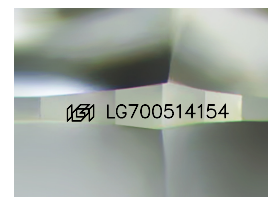
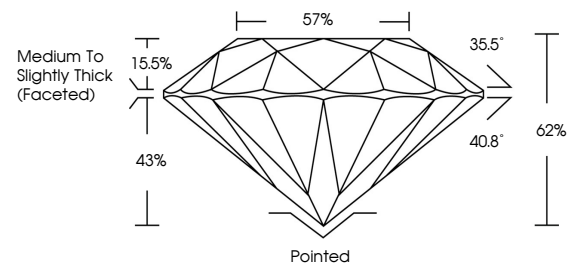


**ELECTRONIC COPY**

## LABORATORY GROWN DIAMOND REPORT

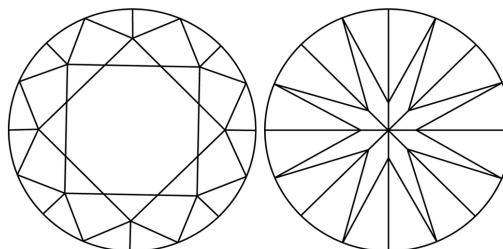
LG700514154  
Report verification at [igi.org](https://igi.org)

## PROPORTIONS



Sample Image Used

## CLARITY CHARACTERISTICS



## KEY TO SYMBOLS

Red symbols indicate internal characteristics.  
Green symbols indicate external characteristics.

## COLOR

D E F G H I J Faint Very Light Light

## CLARITY

IF WS<sup>1-2</sup> VS<sup>1-2</sup> SI<sup>1-2</sup> |<sup>1-3</sup>

Internally Flawless	Very Very Slightly Included	Very Slightly Included	Slightly Included	Included
------------------------	--------------------------------	---------------------------	----------------------	----------

## LABORATORY GROWN DIAMOND REPORT



June 13, 2025

IGI Report Number **LG700514154**Description **LABORATORY GROWN DIAMOND**Shape and Cutting Style **ROUND BRILLIANT**

Measurements 8.11 - 8.15 X 5.04 MM

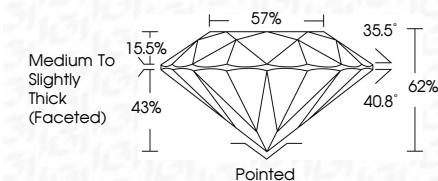
## GRADING RESULTS

Carat Weight **2.05 CARATS**

Color Grade D

Clarity Grade **INTERNALLY FLAWLESS**

Cut Grade **IDEAL**



### ADDITIONAL GRADING INFORMATION

Polish **EXCELLENT**Symmetry **EXCELLENT**

Fluorescence NONI

Inscription(s)  LG700514154

Comments: As Grown - No indication of post-growth treatment.

This Laboratory Grown Diamond was created by High Pressure High Temperature (HPHT) growth process.



© IGI 2020, International Gemological Institute

FD - 10 20

**www.igi.org**



THIS DOCUMENT WAS PRODUCED WITH THE FOLLOWING SECURITY MEASURES: SPECIAL DOCUMENT PAPER, INK SCREENS, WATERMARK, BACKGROUND DESIGNS, HOLOGRAM AND OTHER SECURITY FEATURES NOT LISTED AND DO EXCEED DOCUMENT SECURITY INDUSTRY GUIDELINES

June 13, 2025		IGI Report No. LG7005/1454	
ROUND BRILLIANT		2.05 CARATS	
11.11 x .815 X 6.04 MM		D	
Color Weight		IF	
Color Grade		IDEAL	
Clarity Grade		62%	
Depth		57%	
Table		Medium to Slightly Thick (faceted)	
Girdle		Polished	
Culet		EXCELLENT	
Pavil		EXCELLENT	
Symmetry		NONE	
Fluorescence		#89 LG7005/1454	
Fluorescence (in %)		Comments:	
		As Grown: No indication of post-growth treatment.	
		This Laboratory Grown Diamond was created by High Pressure High Temperature (HPHT) growth process.	
		Type IIa	