

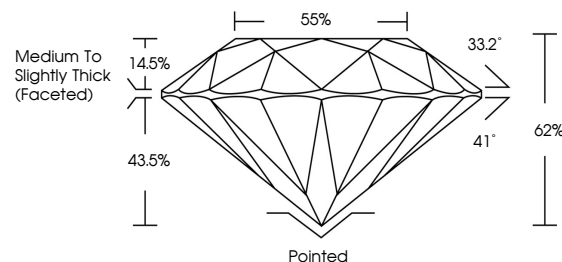


**ELECTRONIC COPY**

## LABORATORY GROWN DIAMOND REPORT

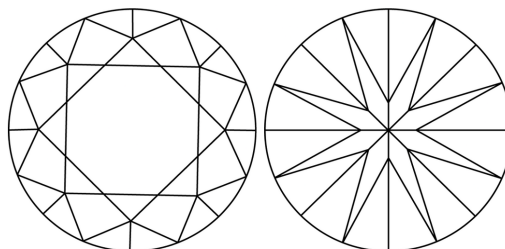
LG700514746  
Report verification at [lgi.org](https://lgi.org)

## PROPORTIONS



Sample Image Used

## CLARITY CHARACTERISTICS



## KEY TO SYMBOLS

Red symbols indicate internal characteristics.  
Green symbols indicate external characteristics.

## COLOR

D E F G H I J Faint Very Light Light

## CLARITY

IF WS<sup>1-2</sup> VS<sup>1-2</sup> SI<sup>1-2</sup> |<sup>1-3</sup>

Internally Flawless	Very Very Slightly Included	Very Slightly Included	Slightly Included	Included
------------------------	--------------------------------	---------------------------	----------------------	----------

## LABORATORY GROWN DIAMOND REPORT



July 1, 2025

IGI Report Number **LG700514746**Description **LABORATORY GROWN DIAMOND**Shape and Cutting Style **ROUND BRILLIANT**

Measurements 8.88 - 8.94 X 5.53 MM

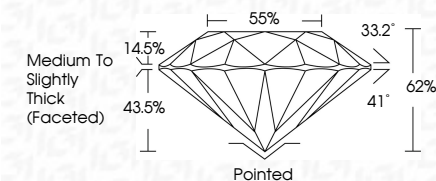
## GRADING RESULTS

Carat Weight **2.70 CARATS**

Color Grade	D
-------------	---

Clarity Grade **INTERNALLY FLAWLESS**

Cut Grade **IDEAL**



### ADDITIONAL GRADING INFORMATION

Polish **EXCELLENT**Symmetry **EXCELLENT**

Fluorescence NONI

Inscription(s)  LG700514746

Comments: As Grown - No indication of post-growth treatment.

This Laboratory Grown Diamond was created by High Pressure High Temperature (HPHT) growth process.  
Type II



IG



© IGI 2020, International Gemological Institute

FD - 10 20

**www.igi.org**



THIS DOCUMENT WAS PRODUCED WITH THE FOLLOWING SECURITY MEASURES: SPECIAL DOCUMENT PAPER, INK SCREENS, WATERMARK, BACKGROUND DESIGNS, HOLOGRAM AND OTHER SECURITY FEATURES NOT LISTED AND DO EXCEED DOCUMENT SECURITY INDUSTRY GUIDELINE

JUN 1, 2025		Report No. LG700514746			
ROUND BRILLIANT		2.70 CARATS			
5.88 - 5.94 X 5.53 MM		D			
Coral Weight		Color Grade			
		Clarity Grade			
		Cut Grade			
		Depth			
		Table			
		Girdle			
		Medium to slightly thick faceted			
		Polished			
		EXCELLENT			
		EXCELLENT			
		NONE			
		689 LG700514746			
Comments: As Grown - No indication of post-growth treatment.					
The Laboratory Grown Diamond was created by High Pressure High Temperature (HPHT) growth process.					
Type IIa					