



ELECTRONIC COPY

LABORATORY GROWN DIAMOND REPORT

| | |
|-------------------------|--------------------------------------|
| May 23, 2025 | |
| IGI Report Number | LG700514846 |
| Description | LABORATORY GROWN DIAMOND |
| Shape and Cutting Style | SQUARE CUSHION MODIFIED BRILLIANT |
| Measurements | 6.80 X 6.80 X 4.57 MM |

GRADING RESULTS

| | |
|---------------|--------------------|
| Carat Weight | 2.01 CARATS |
| Color Grade | FANCY VIVID YELLOW |
| Clarity Grade | VS 1 |

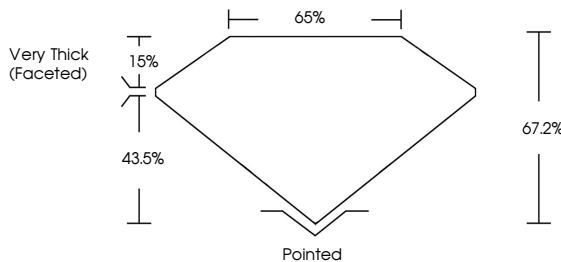
ADDITIONAL GRADING INFORMATION

| | |
|----------------|-----------------|
| Polish | VERY GOOD |
| Symmetry | EXCELLENT |
| Fluorescence | NONE |
| Inscription(s) | 151 LG700514846 |

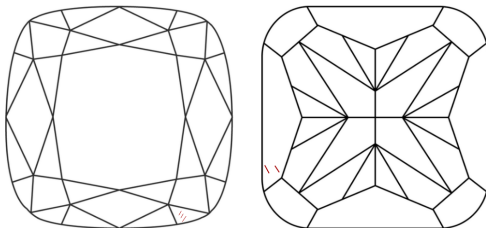
Comments: As Grown - No indication of post-growth treatment.
This Laboratory Grown Diamond was created by High Pressure High Temperature (HPHT) growth process.

LG700514846
Report verification at igi.org

PROPORTIONS

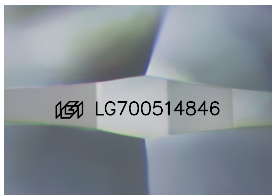


CLARITY CHARACTERISTICS



KEY TO SYMBOLS

Red symbols indicate internal characteristics.
Green symbols indicate external characteristics.



Sample Image Used

COLOR

D E F G H I J Faint Very Light Light

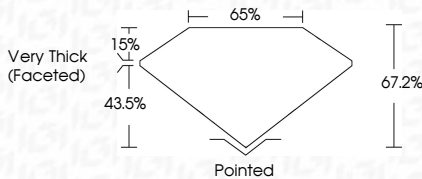
CLARITY

| IF | VVS ¹⁻² | VS ¹⁻² | SI ¹⁻² | I ¹⁻³ |
|---------------------|-----------------------------|------------------------|-------------------|------------------|
| Internally Flawless | Very Very Slightly Included | Very Slightly Included | Slightly Included | Included |


LABORATORY GROWN DIAMOND REPORT



| | |
|-------------------------|--------------------------------------|
| May 23, 2025 | |
| IGI Report Number | LG700514846 |
| Description | LABORATORY GROWN DIAMOND |
| Shape and Cutting Style | SQUARE CUSHION MODIFIED BRILLIANT |
| Measurements | 6.80 X 6.80 X 4.57 MM |
| GRADING RESULTS | |
| Carat Weight | 2.01 CARATS |
| Color Grade | FANCY VIVID YELLOW |
| Clarity Grade | VS 1 |



ADDITIONAL GRADING INFORMATION

| | |
|--|--|
| Polish | VERY GOOD |
| Symmetry | EXCELLENT |
| Fluorescence | NONE |
| Inscription(s) |  LG700514846 |
| Comments: As Grown - No indication of post-growth treatment. | |
| This Laboratory Grown Diamond was created by High Pressure High Temperature (HPHT) growth process. | |



© IGI 2020, International Gemological Institute

FD - 10 20

www.igi.org



THIS DOCUMENT WAS PRODUCED WITH THE FOLLOWING SECURITY MEASURES: SPECIAL DOCUMENT PAPER, INK SCREENS, WATERMARK, BACKGROUND DESIGNS, HOLOGRAM AND OTHER SECURITY FEATURES NOT LISTED AND DO EXCEED DOCUMENT SECURITY INDUSTRY GUIDELINES

| | | | | | | | | |
|-----------------------------------|-------------------------|-------------|--------------------|----------------------|----------|-----------|------|-----------------|
| May 23, 2025 | IG Report No LG70514846 | | 2.01 CARATS | | Polished | VERY GOOD | NONE | 1691 LG70514846 |
| SQUARE CUSHION MODIFIED BRILLIANT | 8.60 X 6.80 X 4.57 MM | | FANCY VIVID YELLOW | V8 1 | | EXCELLENT | | |
| | Carat Weight | Color Grade | Clarity Grade | Depth | 67.26 | | | |
| | | | Table | 65% | | | | |
| | | | Girdle | Very Thick (faceted) | | | | |
| | | | Quar | | | | | |
| | | | Polish | | | | | |
| | | | Symmetry | | | | | |
| | | | Fluorescence | | | | | |
| | | | Inscriptions | | | | | |

Comments:
As Grown - No Indication of post-growth treatment
This Laboratory Grown Diamond was created by High Pressure High Temperature (HPHT) growth process.