

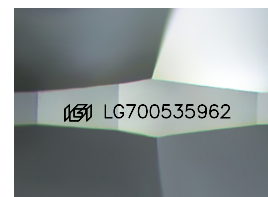
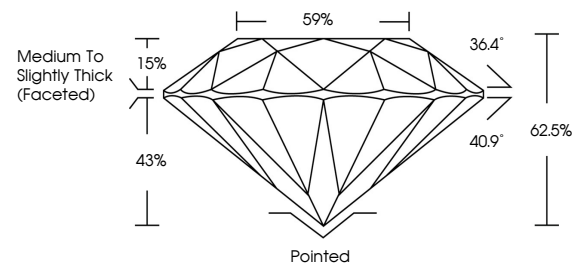


ELECTRONIC COPY

LABORATORY GROWN DIAMOND REPORT

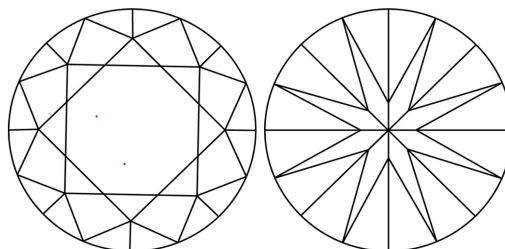
LG700535962
Report verification at igi.org

PROPORTIONS



Sample Image Used

CLARITY CHARACTERISTICS



KEY TO SYMBOLS

Red symbols indicate internal characteristics.
Green symbols indicate external characteristics.

COLOR

D E F G H I J Faint Very Light Light

CLARITY

IF WS¹⁻² VS¹⁻² SI¹⁻² |¹⁻³

Internally Flawless	Very Very Slightly Included	Very Slightly Included	Slightly Included	Included
------------------------	--------------------------------	---------------------------	----------------------	----------

LABORATORY GROWN DIAMOND REPORT



April 19, 2025

IGI Report Number **LG700535962**

Description **LABORATORY GROWN DIAMOND**Shape and Cutting Style **ROUND BRILLIANT**

Measurements 7.36 - 7.41 X 4.62 MM

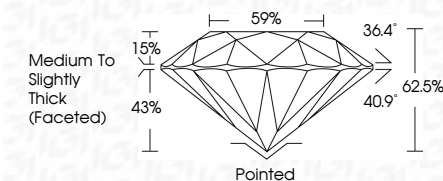
GRADING RESULTS

Carat Weight **1.59 CARAT**

Color Grade E

Clarity Grade **VVS 2**

Cut Grade **EXCELLENT**



ADDITIONAL GRADING INFORMATION

Polish **EXCELLENT**Symmetry **EXCELLENT**Fluorescence **NONE**Inscription(s) LG700535962

Comments: This Laboratory Grown Diamond was created by Chemical Vapor Deposition (CVD) growth process.
Type IIa



© IGI 2020, International Gemological Institute

FD - 10 20

www.igi.org

THIS DOCUMENT WAS PRODUCED WITH THE FOLLOWING SECURITY MEASURES: SPECIAL DOCUMENT PAPER, INK SCREENS, WATERMARK BACKGROUND DESIGNS, HOLOGRAM AND OTHER SECURITY FEATURES NOT LISTED AND DO EXCEED DOCUMENT SECURITY INDUSTRY GUIDELINES

April 19, 2025
IGI Report No LG700535962

ROUND BELLANT	7.36 - 7.41 X 4.02 MM	1.59 CARAT	
Color Grade	Carat Weight	E	
Clarity Grade	Q1 Grade	VVS 2	
Depth	Table	EXCELLENT	
Girdle		62.5%	
Culet		65%	
Polish		Medium to Slightly Thick Faceted	
Symmetry		Pointed	
Fluorescence		EXCELLENT	
		EXCELLENT	
		NONE	
		cert. (GIA/MSA)	

Comments:
This Laboratory Grown Diamond was created by Chemical Vapor Deposition (CVD) growth process.