

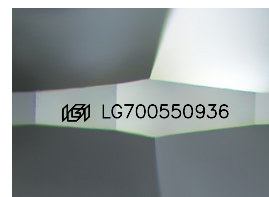
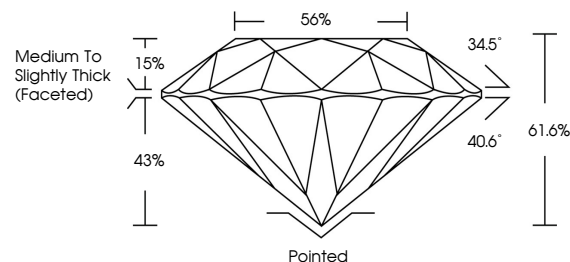


ELECTRONIC COPY

LABORATORY GROWN DIAMOND REPORT

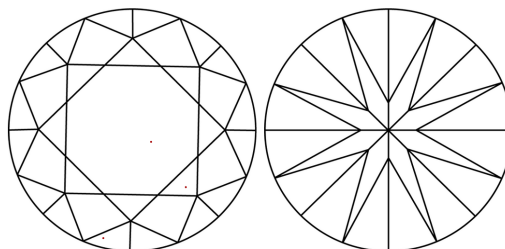
LG700550936
Report verification at lgi.org

PROPORTIONS



Sample Image Used

CLARITY CHARACTERISTICS



KEY TO SYMBOLS

Red symbols indicate internal characteristics.
Green symbols indicate external characteristics.

COLOR

D E F G H I J Faint Very Light Light

CLARITY

IF WS¹⁻² VS¹⁻² SI¹⁻² |¹⁻³

Internally Flawless	Very Very Slightly Included	Very Slightly Included	Slightly Included	Included
------------------------	--------------------------------	---------------------------	----------------------	----------



April 16, 2025

IGI Report Number **LG700550936**

Description	LABORATORY GROWN DIAMOND
-------------	--------------------------

Shape and Cutting Style **ROUND BRILLIANT**

Measurements 6.50 - 6.56 X 4.03 MM

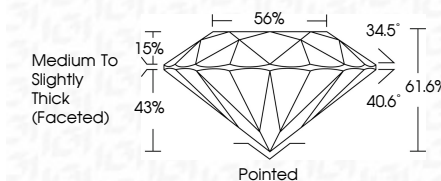
GRADING RESULTS

Carat Weight 1.06 CARAT

Color Grade D

Clarity Grade **VVS 2**

Cut Grade **IDEAL**



ADDITIONAL GRADING INFORMATION

Polish **EXCELLENT**Symmetry **EXCELLENT**Fluorescence **NONE**Inscription(s) LG700550936

Comments: This Laboratory Grown Diamond was created by Chemical Vapor Deposition (CVD) growth process.

Type IIa



© IGI 2020, International Gemological Institute

FD - 10 20

www.igi.org

THIS DOCUMENT WAS PRODUCED WITH THE FOLLOWING SECURITY MEASURES: SPECIAL DOCUMENT PAPER, INK SCREENS, WATERMARK BACKGROUND DESIGNS, HOLOGRAM AND OTHER SECURITY FEATURES NOT LISTED AND DO EXCEED DOCUMENT SECURITY INDUSTRY GUIDELINES

April 16, 2025
IGI Report No LG700550936
ROUND BRILLIANT

6.50 - 6.56 X 4.03 MM	
Carat Weight	1.06 CARAT
Color Grade	D
Cutty Grade	VVS 2
Clarity Grade	IDEAL
Girdle Thickness	61.0%
Table	Medium To Slightly Thick (facet=0)
Symmetry	Poited
Flourescence	EXCELLENT
	EXCELLENT
	NONE

Comments:
This Laboratory Grown Diamond was
created by Chemical Vapor Deposition
(CVD) growth process.