



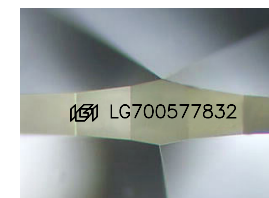
**ELECTRONIC COPY**

LG700577832  
Report verification at [igi.org](http://igi.org)



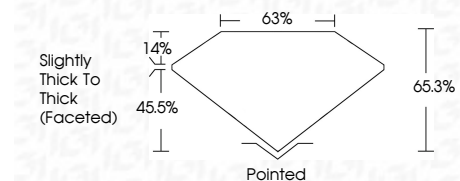
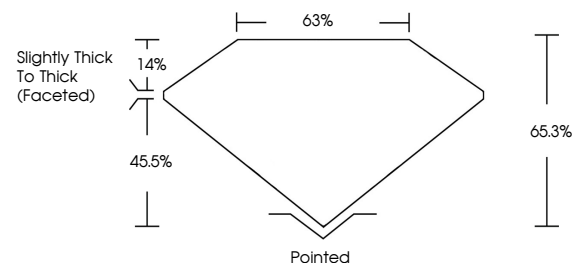
April 29, 2025  
IGI Report Number **LG700577832**  
Description **LABORATORY GROWN DIAMOND**  
Shape and Cutting Style **OVAL BRILLIANT**  
Measurements **10.36 X 7.50 X 4.90 MM**

**GRADING RESULTS**  
Carat Weight **2.50 CARATS**  
Color Grade **K**  
Clarity Grade **VS 1**

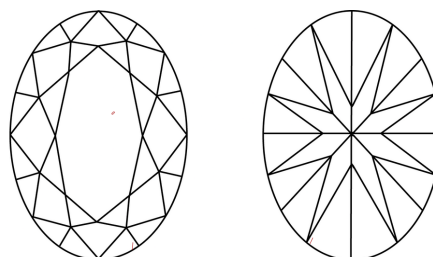


Sample Image Used

**PROPORTIONS**



**CLARITY CHARACTERISTICS**



**KEY TO SYMBOLS**

Red symbols indicate internal characteristics.  
Green symbols indicate external characteristics.

**COLOR**

D E F G H I J Faint Very Light Light

**CLARITY**

IF	WS <sup>1-2</sup>	VS <sup>1-2</sup>	SI <sup>1-2</sup>	I <sup>1-3</sup>
Internally Flawless	Very Very Slightly Included	Very Slightly Included	Slightly Included	Included

**ADDITIONAL GRADING INFORMATION**

Polish **EXCELLENT**  
Symmetry **EXCELLENT**  
Fluorescence **NONE**  
Inscription(s) **IGI LG700577832**  
Comments: This Laboratory Grown Diamond was created by Chemical Vapor Deposition (CVD) growth process.  
Type IIa  
Faint Pinkish Brown

April 29, 2025  
IGI Report Number **LG700577832**  
Description **LABORATORY GROWN DIAMOND**  
Shape and Cutting Style **OVAL BRILLIANT**  
Measurements **10.36 X 7.50 X 4.90 MM**

**GRADING RESULTS**

Carat Weight **2.50 CARATS**  
Color Grade **K**  
Clarity Grade **VS 1**

**ADDITIONAL GRADING INFORMATION**

Polish **EXCELLENT**  
Symmetry **EXCELLENT**  
Fluorescence **NONE**  
Inscription(s) **IGI LG700577832**

Comments: This Laboratory Grown Diamond was created by Chemical Vapor Deposition (CVD) growth process.  
Type IIa  
Faint Pinkish Brown



April 29, 2025  
IGI Report No LG700577832  
OVAL BRILLIANT  
10.36 X 7.50 X 4.90 MM  
Carat Weight **2.50 CARATS**  
Color Grade **K**  
Clarity Grade **VS 1**  
Depth **45.5%**  
Table **65%**  
Girdle **Slightly Thick To Thick (Faceted)**  
Culet **Pointed**  
Polish **EXCELLENT**  
Symmetry **EXCELLENT**  
Fluorescence **NONE**  
Inscription(s) **IGI LG700577832**  
Comments: This Laboratory Grown Diamond was created by Chemical Vapor Deposition (CVD) growth process.  
Type IIa  
Faint Pinkish Brown