



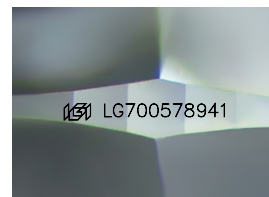
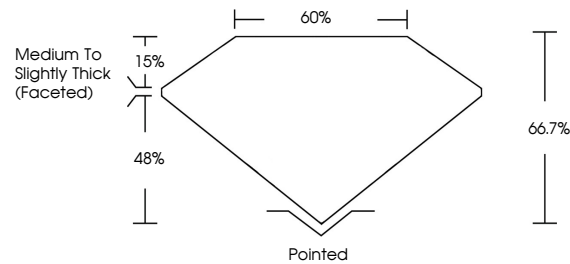
**INTERNATIONAL  
GEMOLOGICAL  
INSTITUTE**

**ELECTRONIC COPY**

## LABORATORY GROWN DIAMOND REPORT

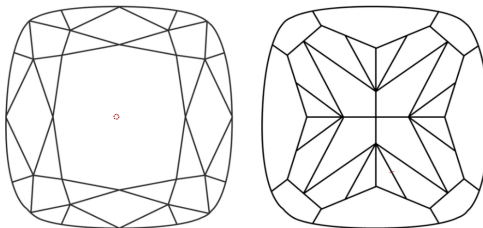
LG700578941  
Report verification at [igi.org](https://igi.org)

## PROPORTIONS



Sample Image Used

## CLARITY CHARACTERISTICS



## KEY TO SYMBOLS

Red symbols indicate internal characteristics.  
Green symbols indicate external characteristics.

**COLOR**

D E F G H I J Faint Very Light Light

## CLARITY

IF                      WS<sup>1-2</sup>                      VS<sup>1-2</sup>                      SI<sup>1-2</sup>                      I<sup>1-3</sup>

Internally Flawless	Very Very Slightly Included	Very Slightly Included	Slightly Included	Included
------------------------	--------------------------------	---------------------------	----------------------	----------



© IGI 2020, International Gemological Institute

FD - 10 20

**www.igi.org**

THIS DOCUMENT WAS PRODUCED WITH THE FOLLOWING SECURITY MEASURES: SPECIAL DOCUMENT PAPER, INK SCREENS, WATERMARK, BACKGROUND DESIGNS, HOLOGRAM AND OTHER SECURITY FEATURES NOT LISTED AND DO EXCEED DOCUMENT SECURITY INDUSTRY GUIDELINES

## LABORATORY GROWN DIAMOND REPORT



May 6, 2025

IGI Report Number **LG700578941**

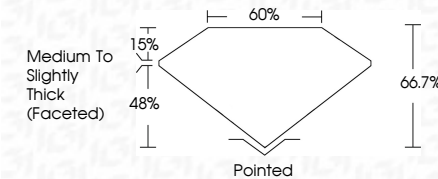
Description	LABORATORY GROWN DIAMOND
-------------	--------------------------

Shape and Cutting Style **SQUARE CUSHION MODIFIED  
BRILLIANT**

Measurements **6.70 X 6.48 X 4.32 MM**

## GRADING RESULTS

Carat Weight 1.52 CARAT

Color Grade **FANCY VIVID BLUE**Clarity Grade VVS 2

### ADDITIONAL GRADING INFORMATION

Polish **EXCELLENT**Symmetry **EXCELLENT**Fluorescence **NONE**Inscription(s)  LG700578941

Comments: This Laboratory Grown Diamond was created by High Pressure High Temperature (HPHT) growth process.

Indications of post-growth treatment.



IG

<b>May 4, 2026</b>	<b>(G) Report No. LG70D579941</b>	<b>SQUARE CUSHION MODIFIED BRILLIANT</b>	<b>1.52 CARAT</b>
<b>6.70 X 6.48 X 4.32 MM</b>	<b>FANCY VIVID BLUE</b>	<b>VVS 2</b>	<b>60%</b>
<b>Carat Weight</b>	<b>Clarity Grade</b>	<b>Depth</b>	<b>Medium To Slightly Thick (rounded)</b>
<b>Color Grade</b>	<b>Table</b>	<b>Girdle</b>	<b>Pointed</b>
			<b>EXCELLENT</b>
			<b>EXCELLENT</b>
			<b>NONE</b>
			<b>#68 LG70D579941</b>

**Comments:**

The Laboratory Grown Diamond was created by High Pressure High Temperature (HPHT) process. Indications of post-growth treatment.

**Comments:**  
This Laboratory Grown Diamond was created by High Pressure High Temperature (HPHT) growth process.