

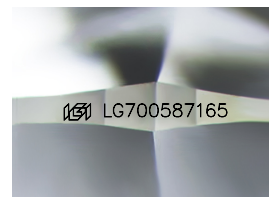
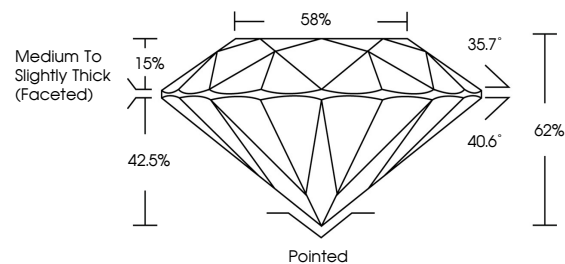


ELECTRONIC COPY

LABORATORY GROWN DIAMOND REPORT

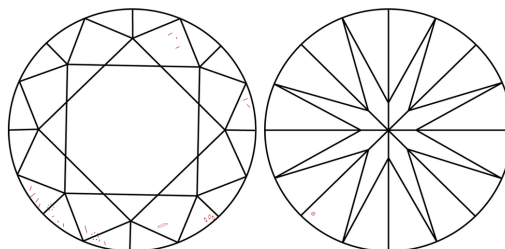
LG700587165
Report verification at igi.org

PROPORTIONS



Sample Image Used

CLARITY CHARACTERISTICS



KEY TO SYMBOLS

Red symbols indicate internal characteristics.
Green symbols indicate external characteristics.

COLOR

D E F G H I J Faint Very Light Light

CLARITY

IF WS¹⁻² VS¹⁻² S¹⁻² |¹⁻³

Internally Flawless	Very Very Slightly Included	Very Slightly Included	Slightly Included	Included
------------------------	--------------------------------	---------------------------	----------------------	----------



© IGI 2020, International Gemological Institute

FD - 10 20

www.igi.org

LABORATORY GROWN DIAMOND REPORT



April 28, 2025

IGI Report Number **LG700587165**

Description	LABORATORY GROWN DIAMOND
-------------	--------------------------

Shape and Cutting Style **ROUND BRILLIANT**

Measurements 6.50 - 6.58 X 4.05 MM

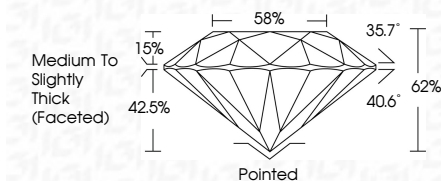
GRADING RESULTS

Carat Weight **1.09 CARAT**

Color Grade	D
-------------	---

Clarity Grade VS 1

Cut Grade **IDEAL**



ADDITIONAL GRADING INFORMATION

Polish VERY GOOD

Symmetry **VERY GOOD**

Fluorescence NONI

Inscription(s) LG700587165

Comments: As Grown - No indication of post-growth treatment.

This Laboratory Grown Diamond was created by High Pressure High Temperature (HPHT) growth process.

Type II



IG

April 28, 2025	1.09 CARAT
G Report No LG700897165	D
ROUND BRILLIANT	Vs 1
	IDEAL
	62%
	86%
	Medium to Slightly Thick (faceted)
	Polished
	VERY GOOD
	VERY GOOD
	NONE
	#61 LG700897165

Comments:
 1. Green: No indication of post-growth treatment.
 2. This Laboratory Green Diamond was created by High Pressure High Temperature (HPHT) growth process.
 Type 1a