

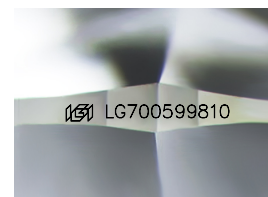
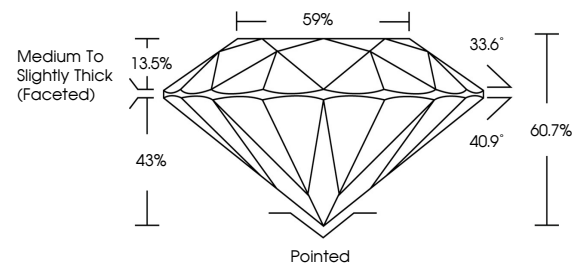


ELECTRONIC COPY

LABORATORY GROWN DIAMOND REPORT

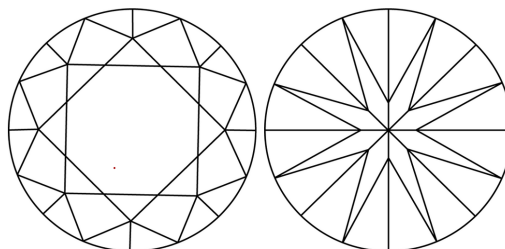
LG700599810
Report verification at igi.org

PROPORTIONS



Sample Image Used

CLARITY CHARACTERISTICS



KEY TO SYMBOLS

Red symbols indicate internal characteristics.
Green symbols indicate external characteristics.

COLOR

D E F G H I J Faint Very Light Light

CLARITY

IF WS¹⁻² VS¹⁻² SI¹⁻² |¹⁻³

Internally Flawless	Very Very Slightly Included	Very Slightly Included	Slightly Included	Included
------------------------	--------------------------------	---------------------------	----------------------	----------



April 22, 2025

IGI Report Number **LG700599810**

Description	LABORATORY GROWN DIAMOND
-------------	--------------------------

Shape and Cutting Style **ROUND BRILLIANT**

Measurements 11.07 - 11.13 X 6.74 MM

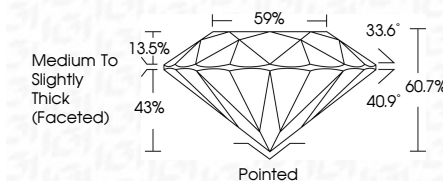
GRADING RESULTS

Carat Weight **5.10 CARATS**

Color Grade F

Clarity Grade **VVS 2**

Cut Grade **IDEAL**



ADDITIONAL GRADING INFORMATION

Polish **EXCELLENT**Symmetry **EXCELLENT**Fluorescence **NONE**Inscription(s) LG700599810

Comments: This Laboratory Grown Diamond was created by Chemical Vapor Deposition (CVD) growth process.
Type IIa



© IGI 2020, International Gemological Institute

FD - 10 20

www.igi.org



THIS DOCUMENT WAS PRODUCED WITH THE FOLLOWING SECURITY MEASURES: SPECIAL DOCUMENT PAPER, INK SCREENS, WATERMARK, BACKGROUND DESIGNS, HOLOGRAM AND OTHER SECURITY FEATURES NOT LISTED AND DO EXCEED DOCUMENT SECURITY INDUSTRY GUIDELINES

April 22, 2026	IGI Report No. LG70599810	ROUND BRILLIANT	11.07 - 11.13 x 6.74 MM	5.10 CARATS	F 2	VW6 2	IDEAL	60.7%	99%	Medium to Slightly Thick (faceted)	Painted	EXCELLENT	EXCELLENT	NONE	#6915270599810	Comments: This Laboratory Growth Diamond was created by Chemical Vapor Deposition (CVD) growth process. Type IIa
			Color Weight		Color Grade	Clarity Grade	Cut Grade	Depth	Table	Girdle	Fluor.	Symmetry	Fluorescence	Inclusions(s)		