

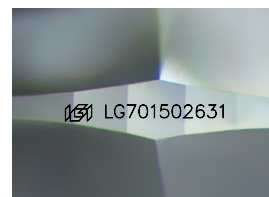
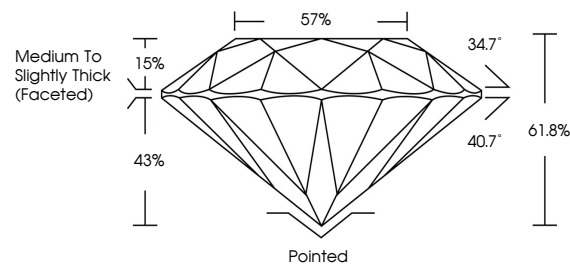


**ELECTRONIC COPY**

## LABORATORY GROWN DIAMOND REPORT

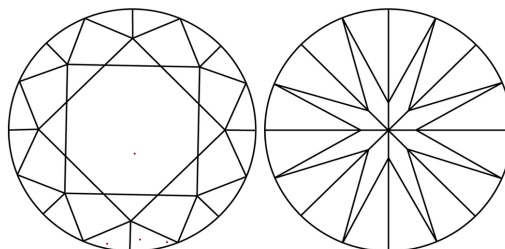
LG701502631  
Report verification at [lgi.org](https://lgi.org)

## PROPORTIONS



Sample Image Used

## CLARITY CHARACTERISTICS



## KEY TO SYMBOLS

Red symbols indicate internal characteristics.  
Green symbols indicate external characteristics.



**www.igi.org**

## LABORATORY GROWN DIAMOND REPORT



April 29, 2025

IGI Report Number LG701502631

Description **LABORATORY GROWN DIAMOND**Shape and Cutting Style **ROUND BRILLIANT**

Measurements 9.30 - 9.35 X 5.76 MM

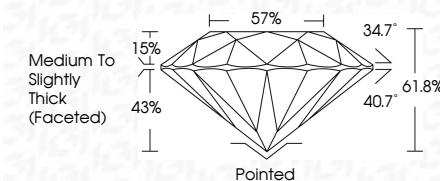
## GRADING RESULTS

Carat Weight **3.09 CARATS**

Color Grade D

Clarity Grade **VS 2**

Cut Grade **IDEAL**



### ADDITIONAL GRADING INFORMATION

Polish **EXCELLENT**Symmetry **EXCELLENT**Fluorescence **NONE**Inscription(s)  LG701502631

Comments: HEARTS & ARROWS

As Grown - No indication of post-growth treatment.

This Laboratory Grown Diamond was created by High

Pressure High Temperature (HPHT) growth process.

Type II



IG

© IGI 2020, International Gemological Institute

FD - 10 20



THIS DOCUMENT WAS PRODUCED WITH THE FOLLOWING SECURITY MEASURES: SPECIAL DOCUMENT PAPER, INK SCREENS, WATERMARK, BACKGROUND DESIGNS, HOLOGRAM AND OTHER SECURITY FEATURES NOT LISTED AND DO EXCEED DOCUMENT SECURITY INDUSTRY GUIDELINES

April 29, 2025  
IGI Report No LG701502631  
ROUND BRILLIANT

|                       |                    |                 |
|-----------------------|--------------------|-----------------|
| 9.30 - 9.35 X 5.76 MM | 3.09 CARATS        | D               |
| Carat Weight          | VVS 2              | IDEAL           |
| Color Grade           | 61.6%              | 57%             |
| Clarity Grade         | Medium to slightly | Thick (faceted) |
| Cut Grade             |                    |                 |
| Depth                 |                    |                 |
| Table                 |                    |                 |
| Girdle                |                    |                 |
| Culet                 |                    |                 |
| Polish                |                    |                 |
| Symmetry              |                    |                 |
| Fluorescence          |                    |                 |

**Comments:**  
As Grown - No indication of post-growth treatment.