



ELECTRONIC COPY

LABORATORY GROWN DIAMOND REPORT

April 22, 2025	
IGI Report Number	LG701508705
Description	LABORATORY GROWN DIAMOND
Shape and Cutting Style	ROUND BRILLIANT
Measurements	9.28 - 9.31 X 5.50 MM

GRADING RESULTS

Carat Weight	2.89 CARATS
Color Grade	F
Clarity Grade	VS 1
Cut Grade	IDEAL

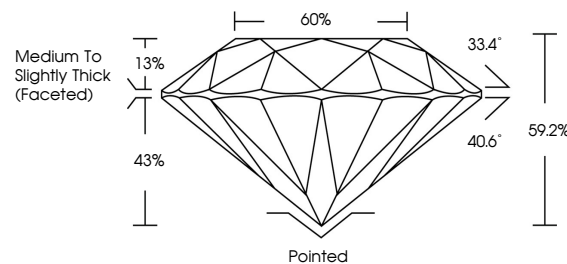
ADDITIONAL GRADING INFORMATION

Polish	EXCELLENT
Symmetry	EXCELLENT
Fluorescence	NONE
Inscription(s)	 LG701508705

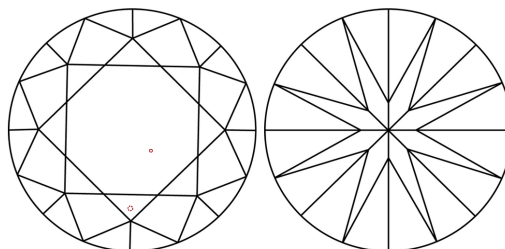
Comments: This Laboratory Grown Diamond was created by Chemical Vapor Deposition (CVD) growth process.
Type IIa

LG701508705
Report verification at igi.org

PROPORTIONS

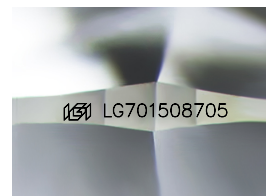


CLARITY CHARACTERISTICS



KEY TO SYMBOLS

Red symbols indicate internal characteristics.
Green symbols indicate external characteristics.



Sample Image Used

COLOR

D E F G H I J Faint Very Light Light

CLARITY

IF VS¹⁻² VS¹⁻² SI¹⁻² |¹⁻³

Internally Flawless	Very Very Slightly Included	Very Slightly Included	Slightly Included	Included
------------------------	--------------------------------	---------------------------	----------------------	----------

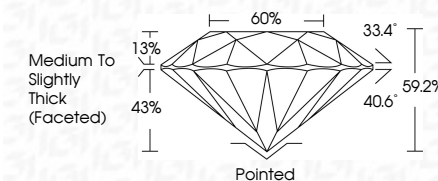
LABORATORY GROWN DIAMOND REPORT



April 22, 2025	
IGI Report Number	LG701508705
Description	LABORATORY GROWN DIAMOND
Shape and Cutting Style	ROUND BRILLIANT
Measurements	9.28 - 9.31 X 5.50 MM

GRADING RESULTS

Carat Weight	2.89 CARATS
Color Grade	F
Clarity Grade	VS 1
Cut Grade	IDEAL



ADDITIONAL GRADING INFORMATION

Polish	EXCELLENT
Symmetry	EXCELLENT
Fluorescence	NONE
Inscription(s)	LG701508705
<p>Comments: This Laboratory Grown Diamond was created by Chemical Vapor Deposition (CVD) growth process.</p> <p>Type IIa</p>	



© IGI 2020, International Gemological Institute

FD - 10 20

www.igi.org



THIS DOCUMENT WAS PRODUCED WITH THE FOLLOWING SECURITY MEASURES: SPECIAL DOCUMENT PAPER, INK SCREENS, WATERMARK, BACKGROUND DESIGNS, HOLOGRAM AND OTHER SECURITY FEATURES NOT LISTED AND DO EXCEED DOCUMENT SECURITY INDUSTRY GUIDELINE

April 22, 2025	2.89 CARATS	Carat Weight	VS 1 IDEAL 59.2% 60% Medium to Slightly Thick (Faceted)	Pointed	EXCELLENT EXCELLENT NONE (49.15/70.15/20.705)	Comments: This is a Crown Diamond was identified by Chemical Vapor Deposition (CVD) growth process. Type IIa
Lab Report No. LG701500705	Color Grade	Clarity Grade		Polish		
ROUND BRILLIANT	Car Grade	Car Grade		Symmetry		
28-29 - 0.31 x 5.50 MM	Table	Depth		Fluorescence		
	Girdle	Inscriptions(s)				