



**ELECTRONIC COPY**

## LABORATORY GROWN DIAMOND REPORT

LG701509233  
Report verification at [igi.org](https://igi.org)

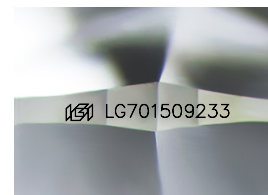
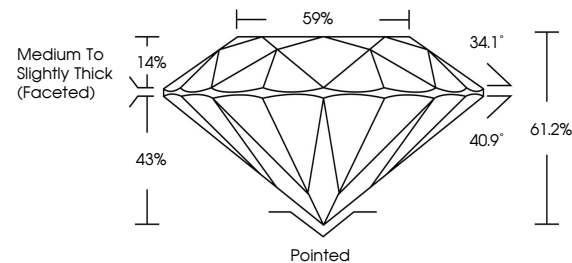
|                         |                          |
|-------------------------|--------------------------|
| April 30, 2025          |                          |
| IGI Report Number       | LG701509233              |
| Description             | LABORATORY GROWN DIAMOND |
| Shape and Cutting Style | ROUND BRILLIANT          |
| Measurements            | 7.08 - 7.12 X 4.34 MM    |
| GRADING RESULTS         |                          |
| Carat Weight            | 1.35 CARAT               |
| Color Grade             | E                        |
| Clarity Grade           | VS 1                     |
| Cut Grade               | IDEAL                    |

### ADDITIONAL GRADING INFORMATION

|                |   |
|----------------|---|
| Polish         | EXCELLENT   |
| Symmetry       | EXCELLENT   |
| Fluorescence   | NONE  |
| Inscription(s) |  LG701509233 |

Comments: This Laboratory Grown Diamond was created by Chemical Vapor Deposition (CVD) growth process.  
Type IIa

## PROPORTIONS



Sample Image Used

## COLOR

D E F G H I J Faint Very Light Light

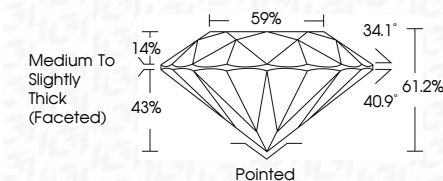
## CLARITY

| IF                  | VS <sup>1-2</sup>           | VS <sup>1-2</sup>      | SI <sup>1-2</sup> | I <sup>1-3</sup> |
|---------------------|-----------------------------|------------------------|-------------------|------------------|
| Internally Flawless | Very Very Slightly Included | Very Slightly Included | Slightly Included | Included         |

## LABORATORY GROWN DIAMOND REPORT



|                         |                          |
|-------------------------|--------------------------|
| April 30, 2025          |                          |
| IGI Report Number       | LG701509233              |
| Description             | LABORATORY GROWN DIAMOND |
| Shape and Cutting Style | ROUND BRILLIANT          |
| Measurements            | 7.08 - 7.12 X 4.34 MM    |
| GRADING RESULTS         |                          |
| Carat Weight            | 1.35 CARAT               |
| Color Grade             | E                        |
| Clarity Grade           | VS 1                     |
| Cut Grade               | IDEAL                    |



### ADDITIONAL GRADING INFORMATION

|   |  |
|---|--|
| Polish  | EXCELLENT  |
| Symmetry  | EXCELLENT  |
| Fluorescence  | NONE   |
| Inscription(s)  |  LG701509233 |
| <p>Comments: This Laboratory Grown Diamond was created by Chemical Vapor Deposition (CVD) growth process.</p> <p>Type IIa</p> |  |



© IGI 2020, International Gemological Institute

FD - 10 20

**www.igi.org**



THIS DOCUMENT WAS PRODUCED WITH THE FOLLOWING SECURITY MEASURES: SPECIAL DOCUMENT PAPER, INK SCREENS, WATERMARK, BACKGROUND DESIGNS, HOLOGRAM AND OTHER SECURITY FEATURES NOT LISTED AND DO EXCEED DOCUMENT SECURITY INDUSTRY GUIDELINES

April 30, 2025  
IGI Report No LG701509233  
ROUND BRILLIANT

|                       |               |                                    |
|-----------------------|---------------|------------------------------------|
| 7.08 - 7.12 X .434 MM | Carat Weight  | 1.35 CARAT                         |
|                       | Color Grade   | E                                  |
|                       | Clarity Grade | VS 1                               |
|                       | Cut Grade     | IDPAL                              |
|                       | Depth         | 61.2%                              |
|                       | Table         | 59%                                |
|                       | Girdle        | Medium to Slightly Thick (Faceted) |
|                       | Culet         | Pointed                            |
|                       | Polish        | EXCELLENT                          |
|                       | Symmetry      | EXCELLENT                          |
|                       | Fluorescence  | NONE                               |
|                       | Inspection    | see comments                       |

**Comments:**  
This Laboratory Grown Diamond was created by Chemical Vapor Deposition (CVD) growth process.